

Section 4

HYDRAULICS68
FINAL ELECTRICAL INSTALLATION82
TESTING.....85

Continue to Section 5

Hydraulics

Hydraulic Lines Cat 725 – Upper Right View

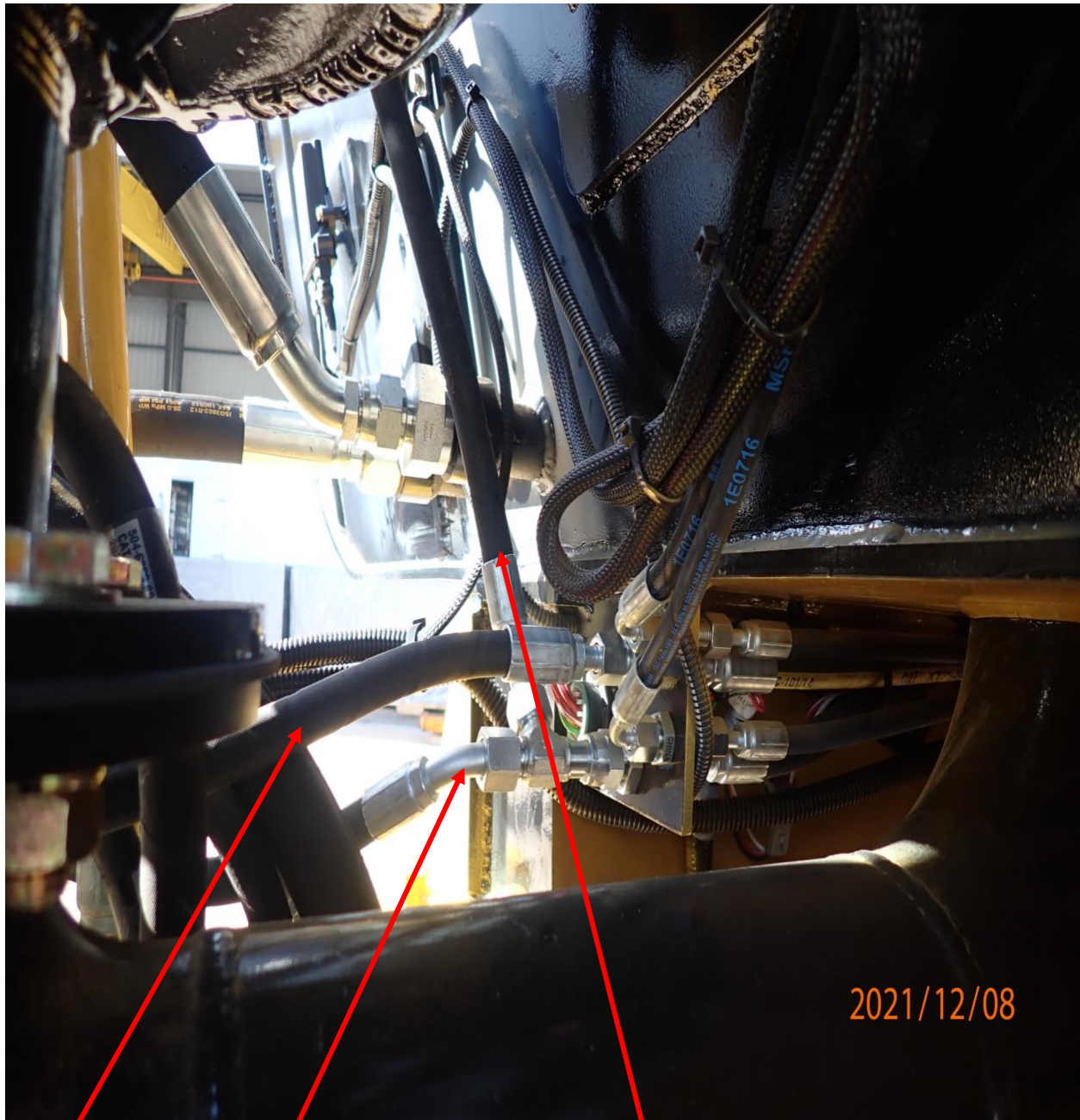


-8 case drain to return

Pressure out of motor to coolant line on water tank

Pressure in to motor

-6 Pressure Line In to Tank



-6 Pressure line in

Return line to truck hydraulic tank

-8 case drain to return tee

Right Side: Cat 725

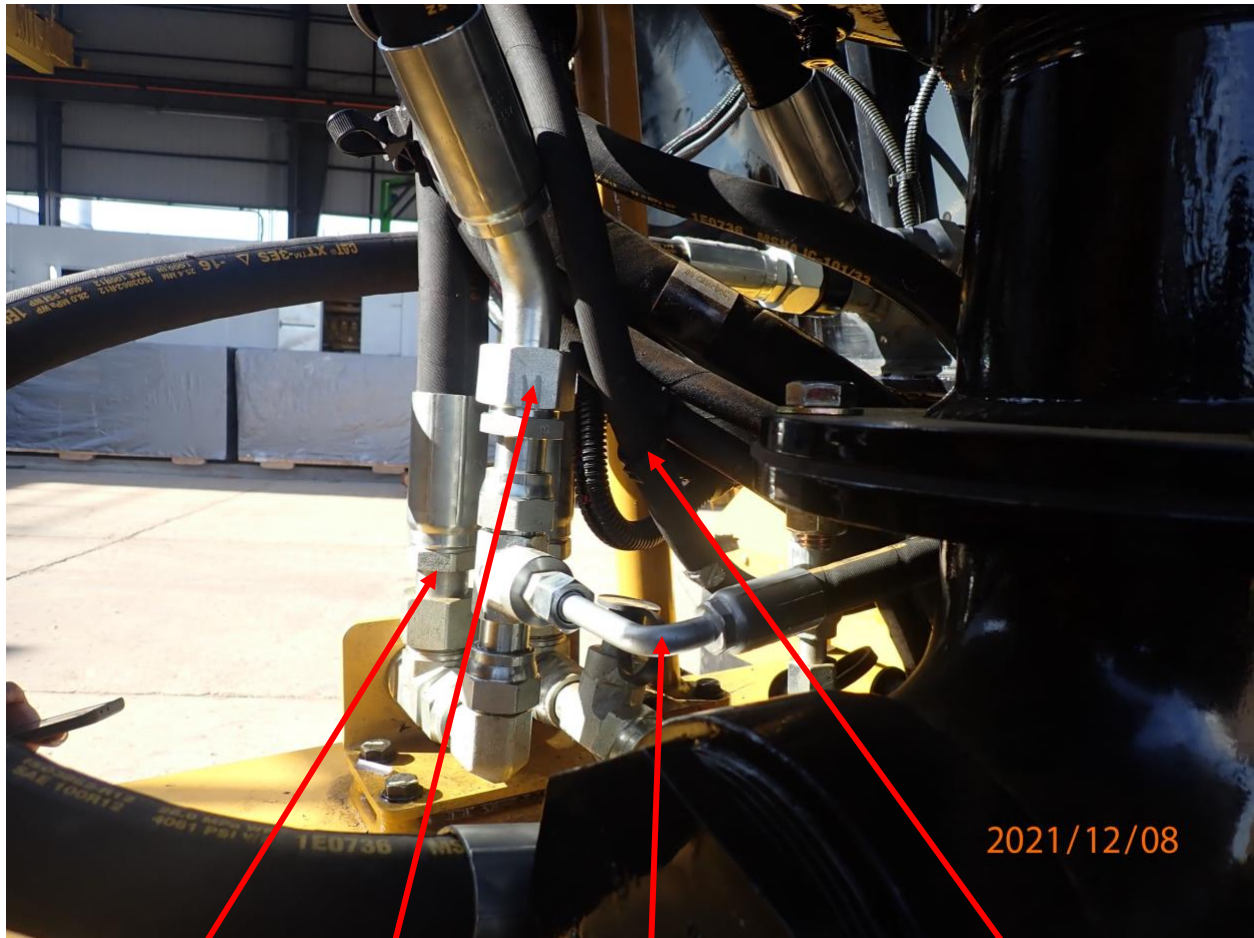


Truck return port

Coolant line return from water tank

Truck pressure port

Pressure In: Cat 725 Right Side



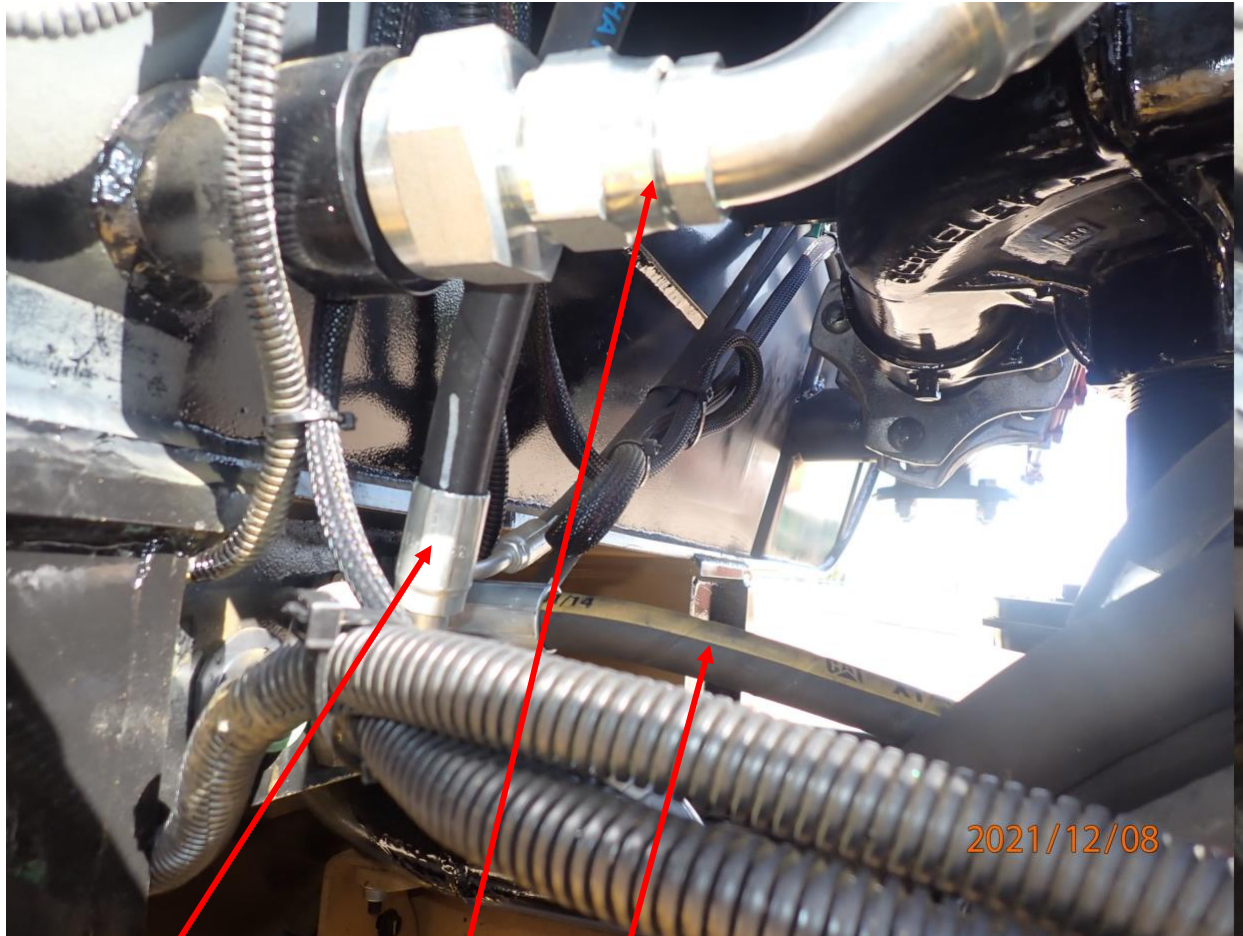
Pressure in from truck

-6 pressure out to water tank control box

-8 Return line to truck hydraulic tank

Pressure out of tee to motor

Right View: Detail Cat 725



-8 case drain into return tee

-8 return line to truck hydraulic tank

Return pressure from motor to tank coolant line in

Left View: Detail Cat 725



Pressure into motor

Return pressure line out of motor

Right View: Cat 730

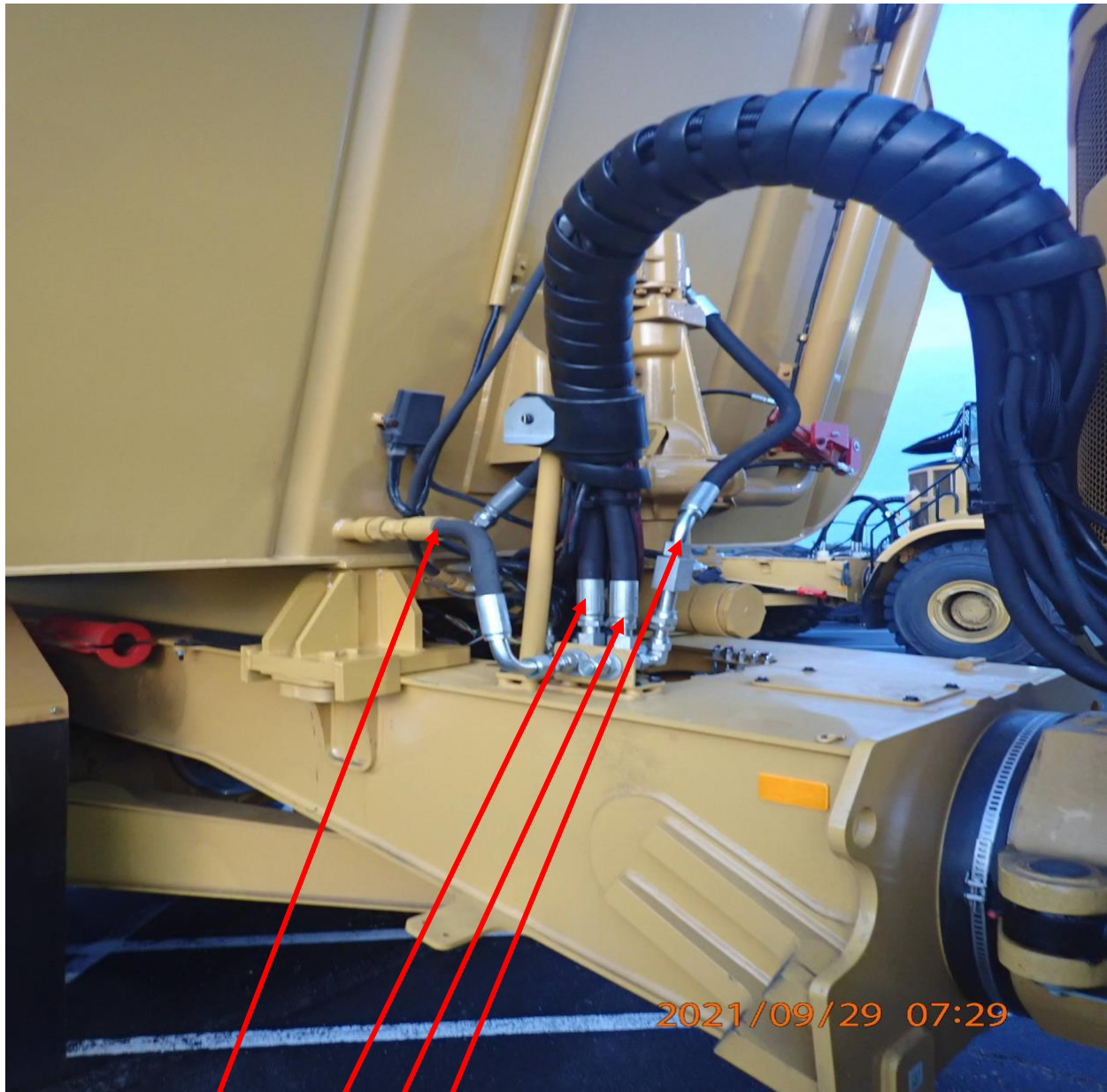


Case drain

-6 pressure into hydraulic control box

-8 tee return out to water tank

Return Lines from Tank: Cat 730



Return line from tank

Return line from truck

Pressure line from truck

Pressure line up to motor

Left View: Cat 730

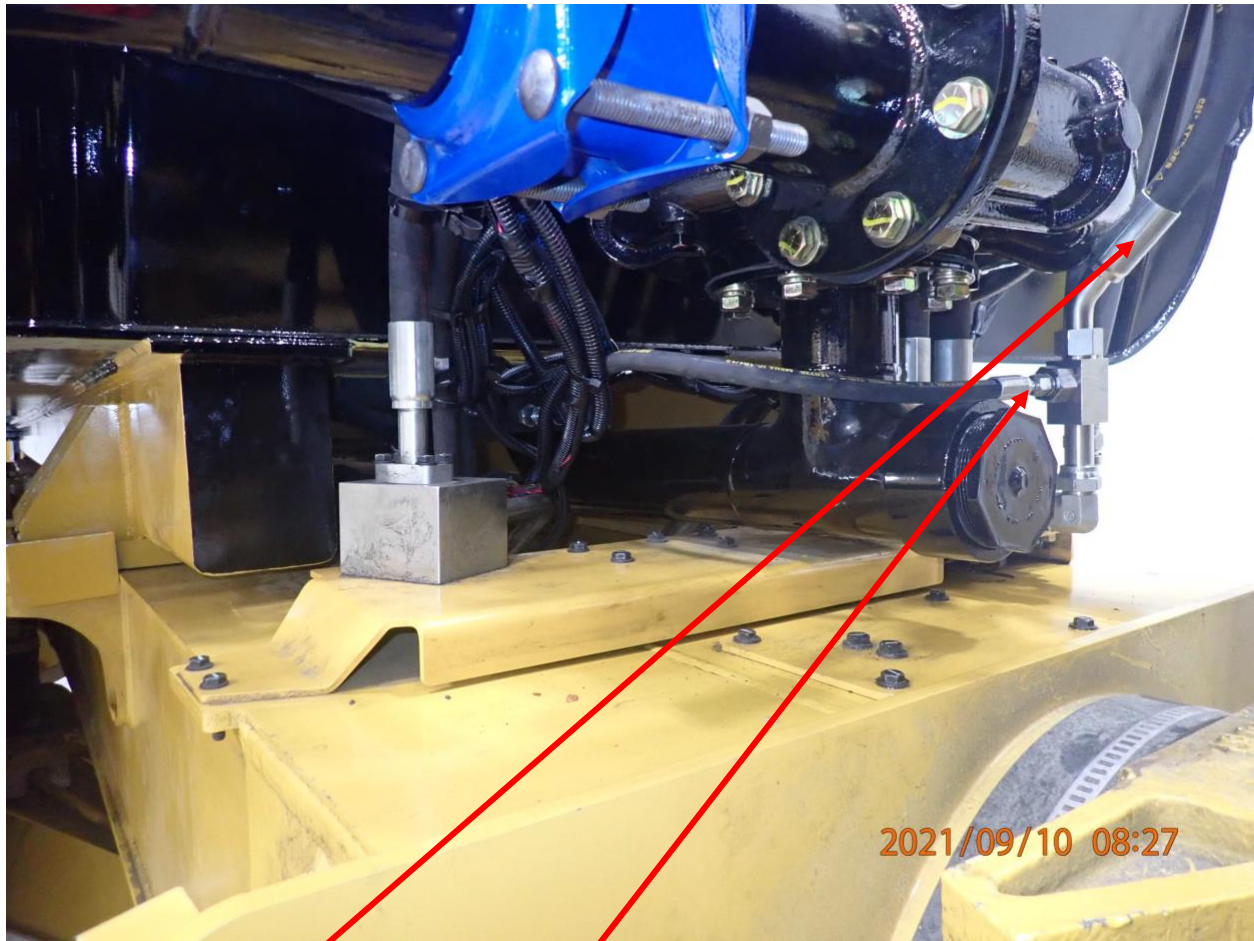


Pressure in from truck

Pressure up to motor

-6 pressure to tank hydraulic control box

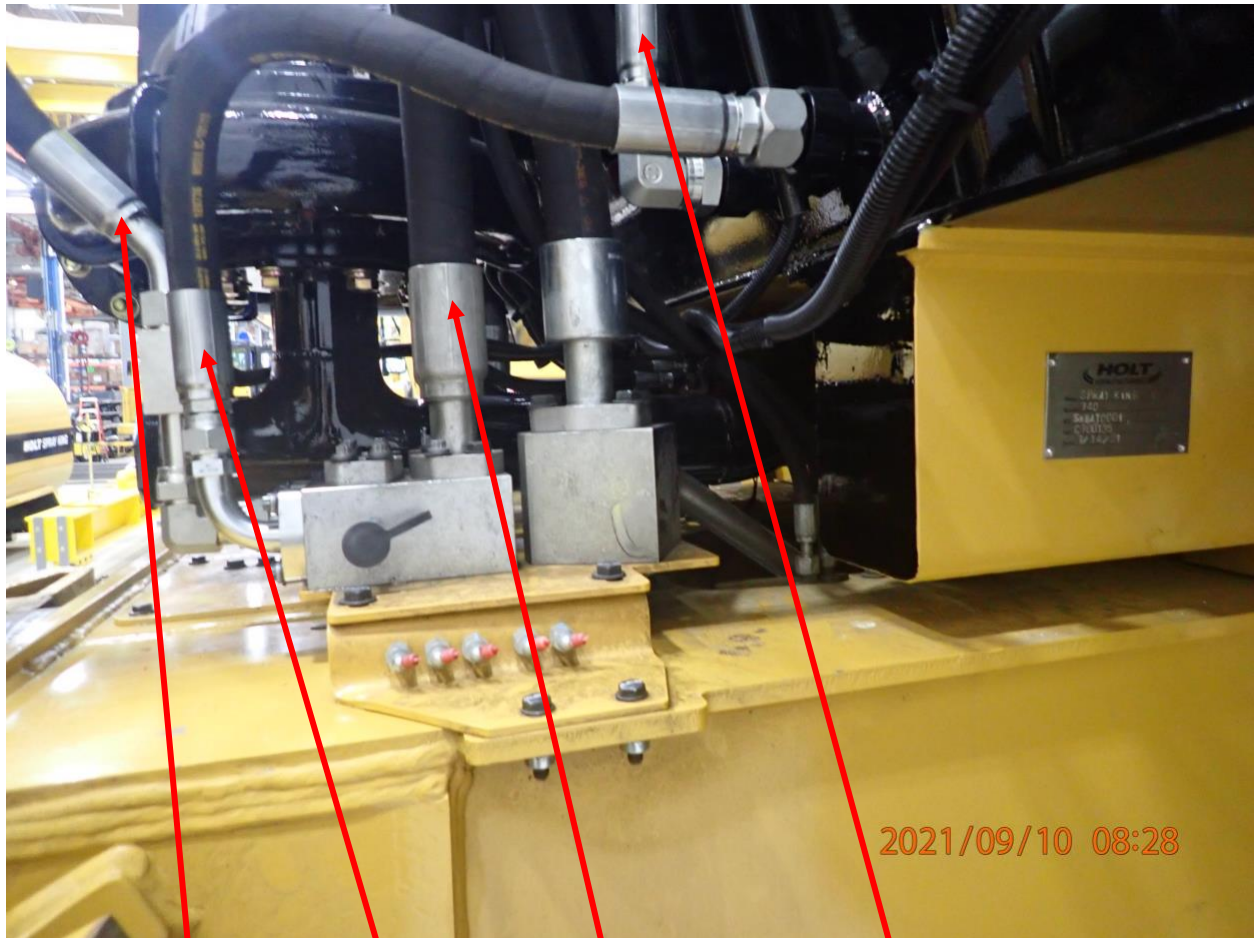
Right View: Cat 740



Pressure out to motor

-6 pressure line into tank control

Pressure Line to Motor: Cat 740



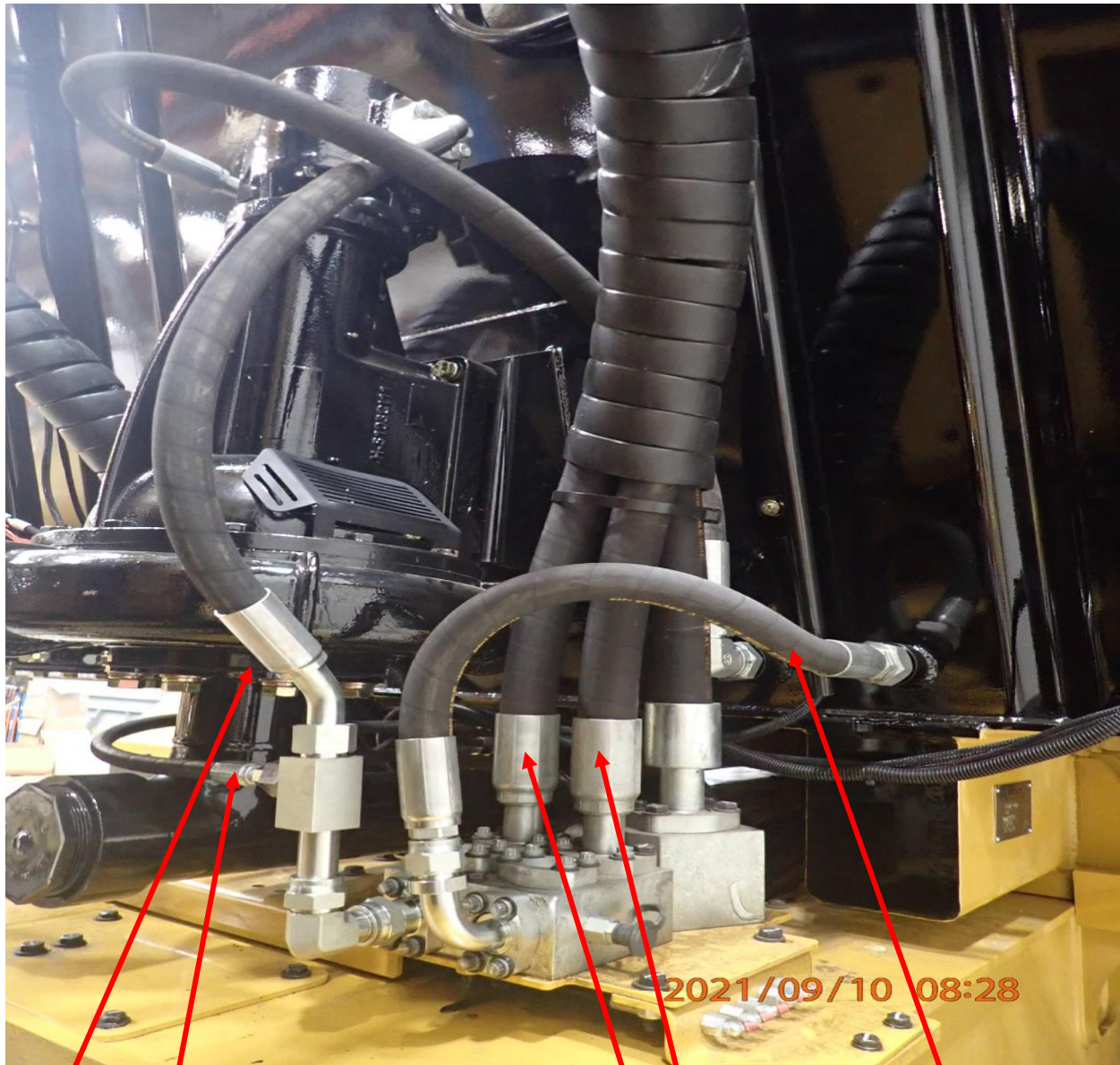
Pressure line up to motor

Return in from coolant line

Pressure line in from truck

Pressure line from motor to coolant line in

Left View: Cat 740

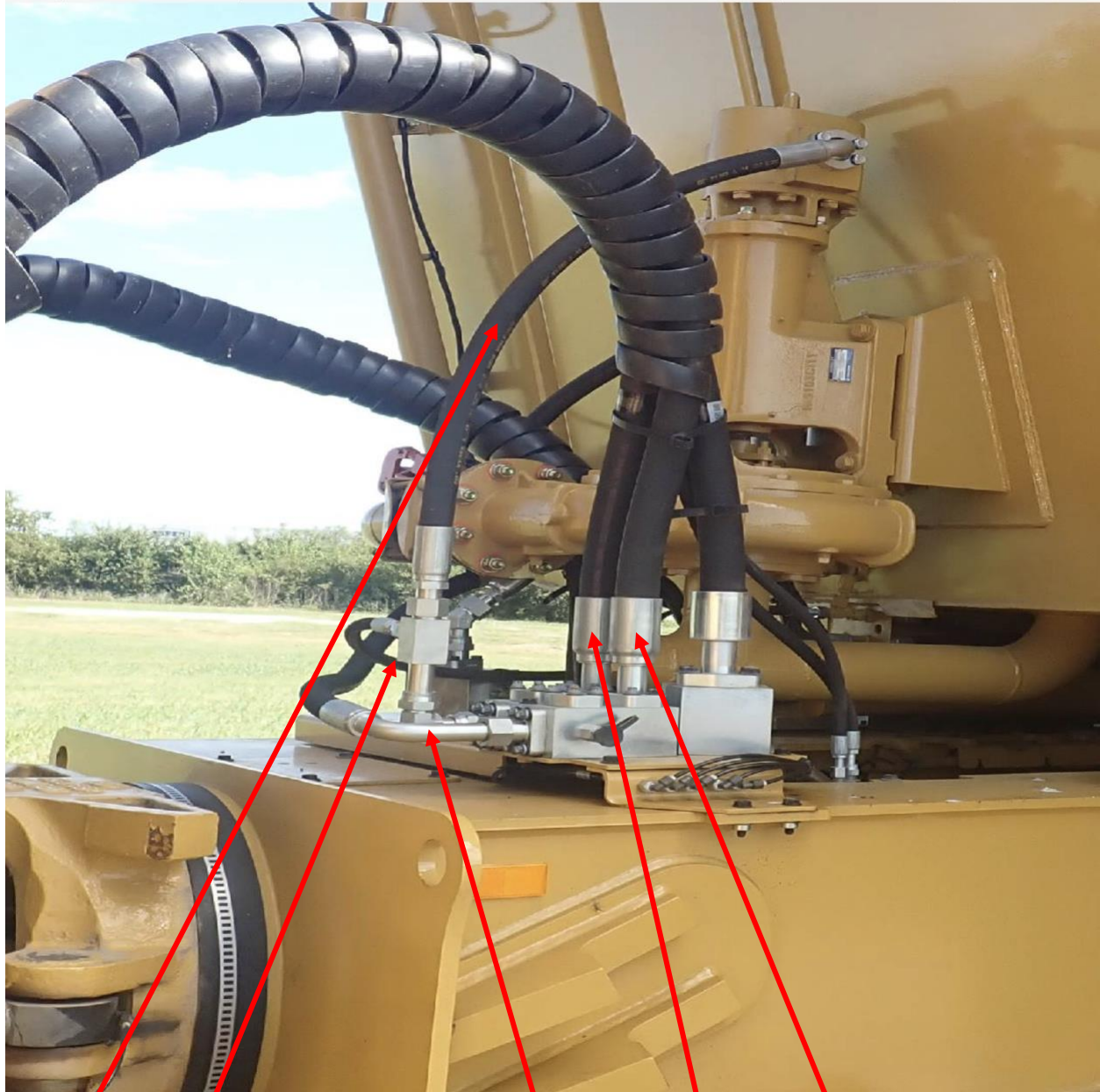


-6 pressure line to water tank control box
Pressure line up to motor

Return line from coolant line in
Return line from truck

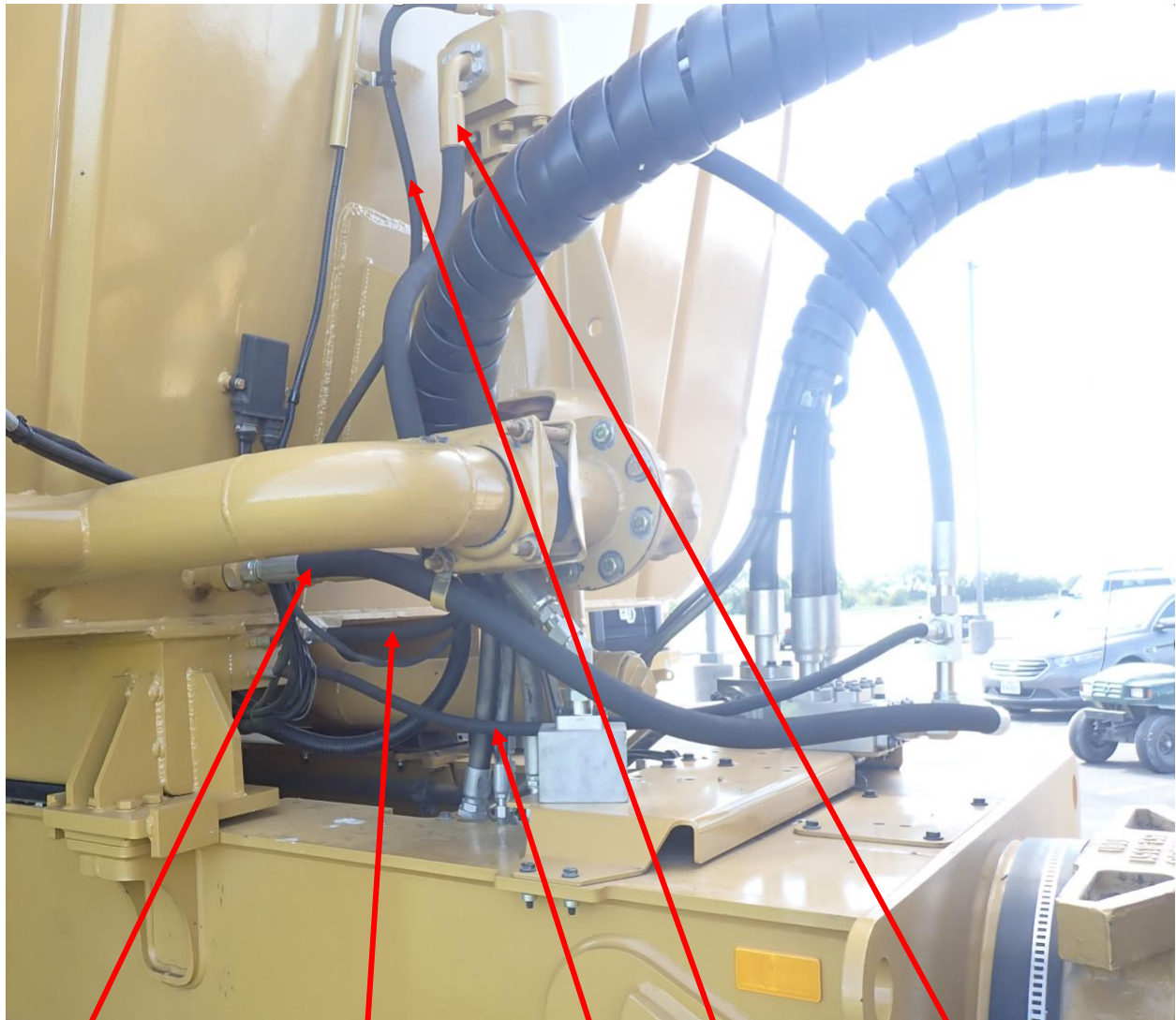
Pressure line in from truck

Left View: Cat 745



- 6 pressure line out to water tank control box
- Return in from coolant line
- Return line out to truck
- Pressure line up to motor
- Pressure line in from truck

Right View: Cat 745



Coolant return line

-8 return to truck hydraulic tank line

Case drain to -8 tee

-6 pressure line into water tank control box

Return pressure from motor to coolant line in

Final Electrical Installation

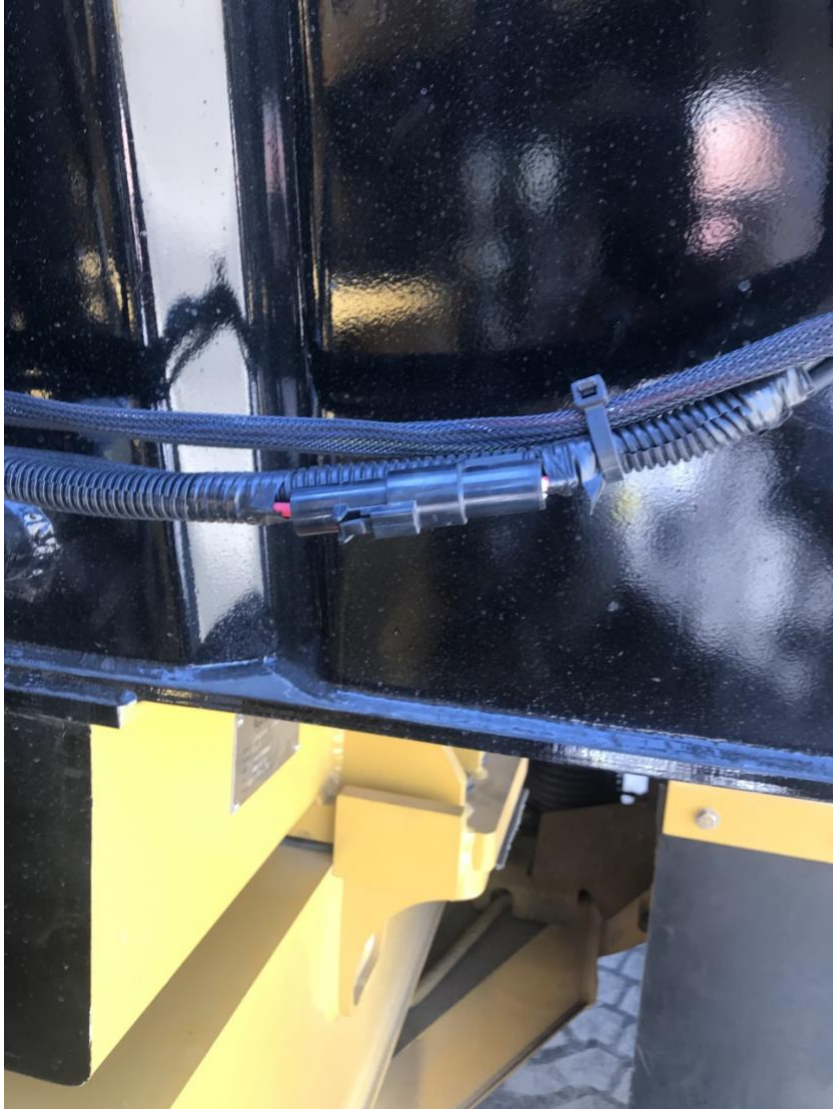
There are three connections to complete from cab to tank.



1. Connect 3-pin plug on main tank harness behind 14-pin plug connector.



2. Connect the main cab harness 14-pin plug to tank bulkhead connector plate.



3. Connect the hose reel one wire connector from separate tank harness located beside bulkhead plate.

Testing



WATER TANK DELIVERY TEST INSPECTION

Date: _____	Tractor #: _____	Model #: _____	Work Order #: _____
Tank serial #: _____			

Visual Inspection

CAB

- 1 Cannon control mounting.
- 2 Wiring placement inside cab and exiting cab.
- 3 Spray head control mounting.
- 4 Screen mounting.
- 5 Fuse and relay mounting.

ITEMS TO INSPECT

- Location, hardware used, Identification labels
- Isolators, p clamps, loom
- Location, illuminations ID labels
- Location
- Correct amperage and insulation protection

OK OR X FOR NOT OK

TANK

- 6 Paint and decals
- 7 Water pump
- 8 Cannon
- 9 Hose reel
- 10 Lights & Back up alarm
- 11 Fenders & Mud flaps
- 12 Spray heads
- 13 Water lines
- 14 Hydraulic lines
- 15 Electrical lines
- 16 Air lines
- 17 Brake lines
- 18 Wheels, hubs, and lugs
- 19 Holt Manufacturing ID plates

- Appearance and lettering
- Size and RPM ID tag
- ID tag & appearance
- ID tag & appearance
- Illumination and Audible
- Appearance and placement
- Appearance and placement
- Clamps, hose placement, and leaks
- Appearance, placement, and leaks
- Appearance, loom, placement, and receptacles
- Placement
- Placement
- Torque marks, missing lugs, hub alignment
- Placement

Operational Inspection

CAB

- 20 Function test hydraulic engagement.
- 21 Water pump RPM test/ engine idle and full RPM
- 22 Function test cannon.
- 23 Function test control center or screen for spray heads.
- 25 Function test all lights, back up alarm, and camera.
- 26 Apply and test brakes on tank end of machine.
- 27 Function test hose reel.
- 28 Open water valve for hose reel and test.
- 29 Fully articulate truck end left and right .
- 30 Tank level
- 31 Hydraulic system indication
- 32 ROJO spray nozzles valves and motors.
- 33 Low water shut down of hydraulic pressure.
- 34 360 Camera view.
- 35 Connect hydraulic gauge to service port tap.
- 36 Connect gauge to water manifold.

ITEMS TO INSPECT

- Activate and check for leaks.
- Using photo tac record RPM speed.
- Test all motion and measure spray distance
- ON-OFF test spray nozzles. Distanced of spray.
- Visually checking each light & horn disables.
- Place machine in drive. Insure rear brakes work.
- Roll hose out and retract using motor or handle.
- Test spray distance and check hose for leaks.
- Check for biting and chafing of hoses/ wires
- Check sight tube or proximity sensor calibration
- Hydraulic operation at full speed of truck.
- Operations of motor and shut off valves spray distance
- Hydraulic pressure shut down at 3% water level.
- Camera alignment and functionality.
- Verify pressure at full RPM and record.
- Verify pressure at full RPM and record.

Items not inspected and test results noted on page two

Page 2

REMARKS FROM VISUAL INSPECTION

Insp. #	Remarks & Repairs made

TEST RESULTS AND REMARKS FROM OPERATIONAL TEST

Engine RPM idle _____	Right ROJO spray head _____
Max Engine RPM _____	GILMOR SCREEN SCRIPT FILE SETTINGS _____
Cannon spray distance _____	Duty cycle set to in pump off _____
Left spray head distance _____	Duty cycle set to in pump on _____
Left center spray head distance _____	Water depth inches _____
Right center spray head distance _____	Hydraulic pressure test _____
Right spray head distance _____	Water manifold pressure test _____
Hose on reel spray distance _____	Water pump RPM _____
Left ROJO spray head _____	Water pump RPM _____

Delivery Inspector: _____

Date: _____

Job title:
Version 1.4

21-Feb