

### HARNESS/WIRE IDENTIFICATION CODE

HARNESS ID: [xxxx]-[xxxx] [xx]-[xx]

WIRE GROUP: [xxxx] GAUGE: [xx]

### COLOR ABBREVIATIONS

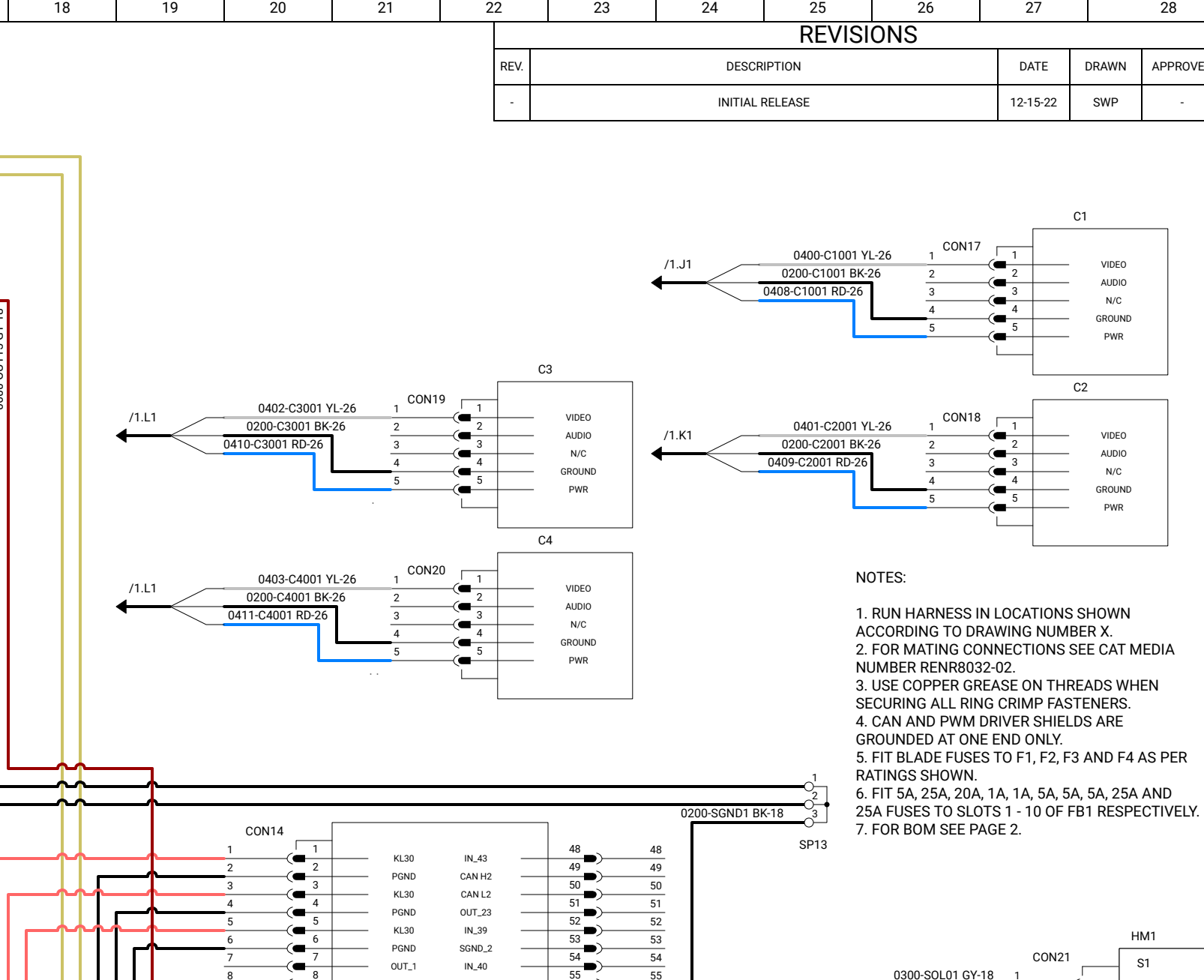
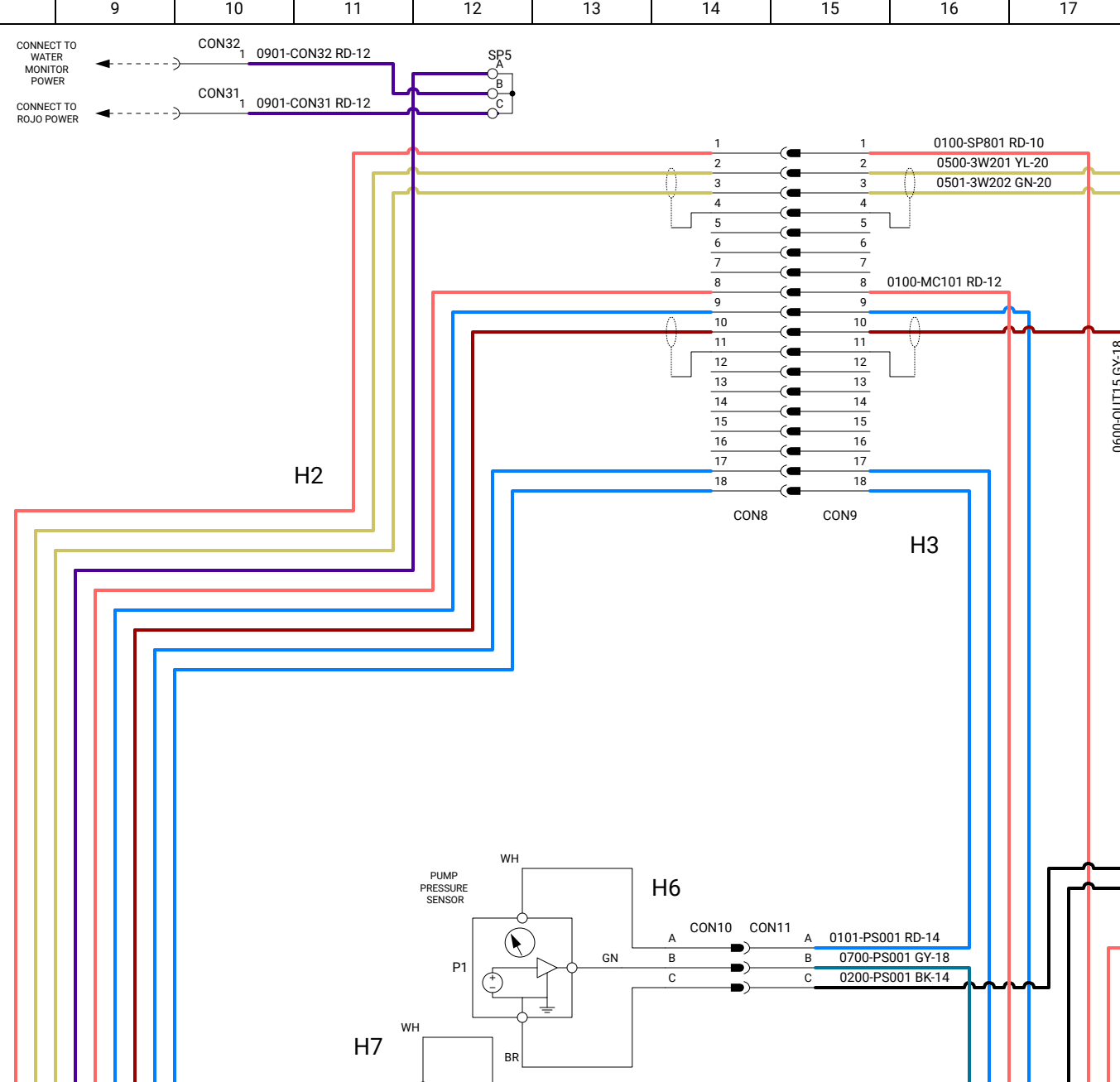
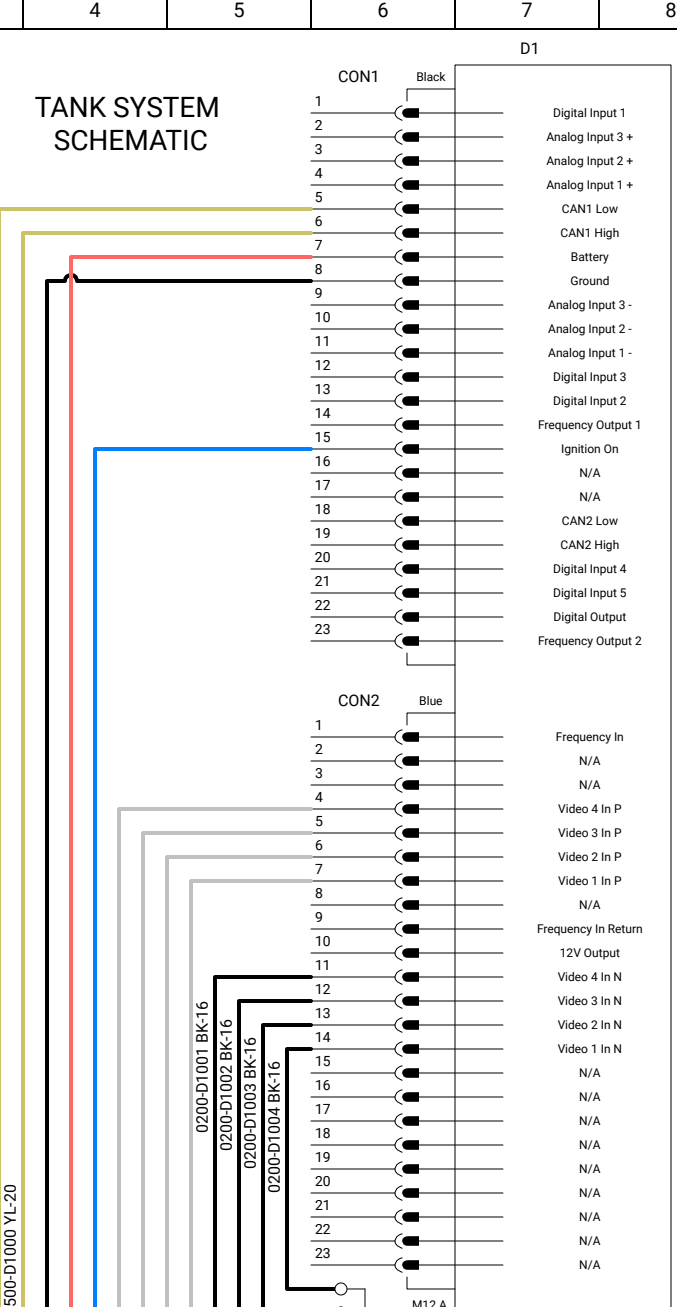
RD	RED
WH	WHITE
OR	ORANGE
YL	YELLOW
PK	PINK
BK	BLACK
GY	GRAY
PJ	PURPLE
BR	BROWN
GN	BROWN
BU	BLUE

### LINE PATTERNS

---	WIRE
- - -	COMPONENT GROUP
○	SYMBOLS

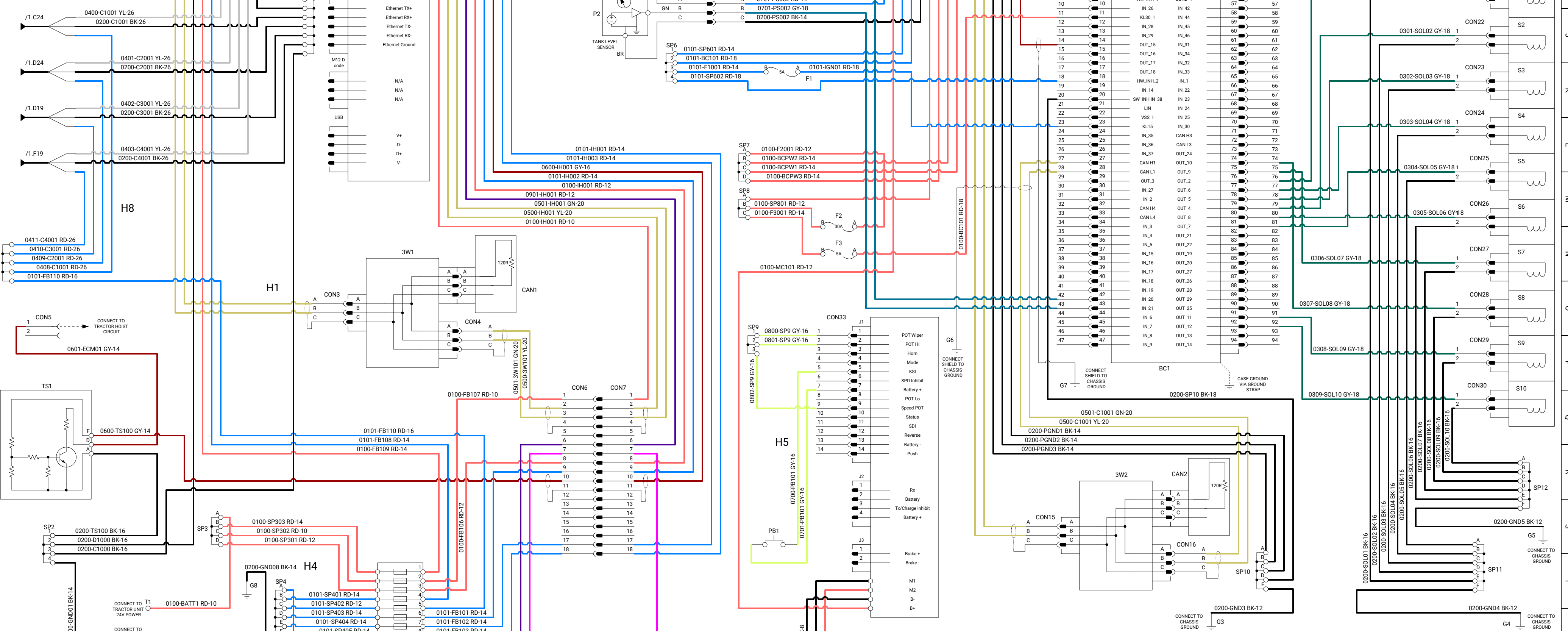
### COLOR DESCRIPTIONS

(Red)	24V POWER
(Black)	SWITCHED 24V POWER
(Green)	GROUND
(Blue)	JOYSTICK CIRCUIT
(Purple)	MONITOR CIRCUIT
(Pink)	REVERSE LIGHT AND BACKUP ALARM
(Orange)	TAIL LIGHT CIRCUIT
(Yellow)	TURNOFF CIRCUIT
(Light Blue)	STOP CIRCUIT
(Light Green)	PUMP PWM EMULATION
(Light Yellow)	ROJO CIRCUIT
(Light Purple)	LEVEL/PRESSURE SENSOR CIRCUIT
(Light Blue-Gray)	WATER TRUCK CANBUS
(Light Green-Gray)	SOLENOID DRIVER CHANNELS
(Light Purple-Gray)	VIDEO
(Light Blue-Gray)	BRAKE SYSTEM
(Light Green-Gray)	12V POWER
(Light Yellow-Gray)	SWITCHED 12V POWER
(Light Purple-Gray)	HOSE REEL CIRCUIT



REVISIONS				
REV.	DESCRIPTION	DATE	DRAWN	APPROVED
-	INITIAL RELEASE	12-15-22	SWP	-


- NOTES:
1. RUN HARNESS IN LOCATIONS SHOWN ACCORDING TO DRAWING NUMBER X.
  2. FOR MATING CONNECTIONS SEE CAT MEDIA NUMBER RENR8032-02.
  3. USE COPPER GREASE ON THREADS WHEN SECURING ALL RING CRIMP FASTENERS.
  4. CAN AND PWM DRIVER SHIELDS ARE GROUNDED AT ONE END ONLY.
  5. FIT BLADE FUSES TO F1, F2, F3 AND F4 AS PER RATINGS SHOWN.
  6. FIT 5A, 25A, 20A, 1A, 1A, 5A, 5A, 25A AND 25A FUSES TO SLOTS 1 - 10 OF FB1 RESPECTIVELY.
  7. FOR BOM SEE PAGE 2.



DRAWN	SWP	DATE	10/04/2023	DWG NO.	10002-803	SIZE	C	REV.	
CHECKED	ABP	DATE	10/10/2023	TITLE	SK6AT WATER TANK ELECTRICAL SCHEMATIC				
APPROVED		DATE	MM/DD/YYYY	PROPRIETARY AND CONFIDENTIAL. THE INFORMATION CONTAINED IN THIS DRAWING IS THE SOLE PROPERTY OF HOLT MANUFACTURING. ANY REPRODUCTION IN PART OR AS A WHOLE WITHOUT THE WRITTEN PERMISSION OF HOLT MANUFACTURING IS PROHIBITED.					
PAGE	1 of 5	SCALE	NTS						

A  
B  
C  
D  
E  
F  
G  
H  
I  
J  
K  
L  
M  
N  
O  
P  
Q  
R  
S  
T

REFERENCE	DESCRIPTION	PART NUMBER	MANUFACTURER
SP2	SPLICE PACK	DT04-4P-P021	DEUTSCH
SP3	SPLICE PACK	38076	APTV/WAYTEK
SP4	SPLICE PACK	38076	APTV/WAYTEK
SP5	SPLICE PACK	38076	APTV/WAYTEK
SP6	SPLICE PACK	DT04-4P-P021	DEUTSCH
SP7	SPLICE PACK	38076	APTV/WAYTEK
SP8	SPLICE PACK	38076	APTV/WAYTEK
SP9	SPLICE PACK	DT04-4P-P021	DEUTSCH
SP10	SPLICE PACK	38076	APTV/WAYTEK
SP11	SPLICE PACK	38076	APTV/WAYTEK
SP12	SPLICE PACK	38076	APTV/WAYTEK
SP13	SPLICE PACK	DT04-4P-P021	DEUTSCH
M1	HOSE REEL MOTOR	1185-1124-EF	COX REELS
CAN1	CAN RESISTOR	AT06-3S R120	AMPHENOL
CAN2	CAN RESISTOR	AT06-3S R120	AMPHENOL
D1	DISPLAY	PV700-T	ENNOVATION
BC1	BODAS CONTROLLER	RC10-10/31	BOSCH REXROTH
TS1	TRANSISTOR SWITCH ASSEMBLY	1-00513-01	HOLT MFG
F1	FUSE AND PLUG	12033769, 12033731	APTV/WAYTEK
F2	FUSE AND PLUG	12033769, 12033731	APTV/WAYTEK
F3	FUSE AND PLUG	12033769, 12033731	APTV/WAYTEK
3W1	3 WAY CONNECTOR	AT04-3P RV01	AMPHENOL
3W2	3 WAY CONNECTOR	AT04-3P RV01	AMPHENOL
P1	PUMP PRESSURE SENSOR	DMP931110-P150-3-3-TA0-F00-1-1-1-000	SENSOR ONE
P2	TANK LEVEL SENSOR	DMP931110-P005-3-3-TA0-F00-1-1-1-000	SENSOR ONE
CON1	CONNECTOR	770680-1	AMP
CON2	CONNECTOR	770680-5	AMP
CON3	CONNECTOR	DT06-3S	DEUTSCH
CON4	CONNECTOR	DT06-3S	DEUTSCH
CON5	CONNECTOR	DT06-2S-EP11	DEUTSCH
CON6	CONNECTOR	AHDP06-24-18SN-SRA	AMPHENOL
CON7	CONNECTOR	AHDP06-24-18PN-SRA	AMPHENOL
CON8	CONNECTOR	AHDP06-24-18SN-SRA	AMPHENOL
CON9	CONNECTOR	AHDP06-24-18PR-SRA	AMPHENOL
CON10	CONNECTOR	DT04-3P-ED04	DEUTSCH
CON11	CONNECTOR	DT06-3S-ED04	DEUTSCH
CON12	CONNECTOR	DT04-3P-ED04	DEUTSCH
CON13	CONNECTOR	DT06-3S-ED04	DEUTSCH
CON14	CONNECTOR	R917010843	BOSCH REXROTH
CON15	CONNECTOR	DT06-3S-ED04	DEUTSCH
CON16	CONNECTOR	DT06-3S-ED04	DEUTSCH
CON17	CONNECTOR	RVS-10SN	RVS
CON18	CONNECTOR	RVS-10SN	RVS
CON19	CONNECTOR	RVS-10SN	RVS
CON20	CONNECTOR	RVS-10SN	RVS
CON21	CONNECTOR	DT06-2S-ED04	DEUTSCH
CON22	CONNECTOR	DT06-2S-ED04	DEUTSCH
CON23	CONNECTOR	DT06-2S-ED04	DEUTSCH
CON24	CONNECTOR	DT06-2S-ED04	DEUTSCH
CON25	CONNECTOR	DT06-2S-ED04	DEUTSCH
CON26	CONNECTOR	DT06-2S-ED04	DEUTSCH
CON27	CONNECTOR	DT06-2S-ED04	DEUTSCH
CON28	CONNECTOR	DT06-2S-ED04	DEUTSCH
CON29	CONNECTOR	DT06-2S-ED04	DEUTSCH
CON30	CONNECTOR	DT06-2S-ED04	DEUTSCH
CON31	CONNECTOR	DTHD06-1-12S	DEUTSCH
CON32	CONNECTOR	DTHD06-1-12S	DEUTSCH
CON33	CONNECTOR	99-01-2140	MOLEX
C1	REARVIEW CAMERA	RVS-659	RVS
C2	DRIVER SIDE CAMERA	RVS-659	RVS
C3	MANHOLE CAMERA	RVS-770	RVS
C4	KERB SIDE CAMERA	RVS-659	RVS
H1	HARNESS	10051-811	HOLT MFG
H2	HARNESS	10052-811	HOLT MFG
H3	HARNESS	10053-811	HOLT MFG
H4	HARNESS	10054-811	HOLT MFG
H5	HARNESS	10055-811	HOLT MFG
H6	HARNESS	10056-811	HOLT MFG
H7	HARNESS	10057-811	HOLT MFG
H8	HARNESS	10058-811	HOLT MFG
H9	HARNESS	10015-811	HOLT MFG
HM1	HYDRAULIC MANIFOLD	2712513	WOMACK
FB1	FUSE BOX	PD6610012XM	LITTLEFUSE
PB1	PUSH BUTTON SWITCH	M-608-BX	LITTLEFUSE
MC1	MOTOR CONTROLLER	1212P	CURTIS
CT1	CONTACTOR	167-0138	CAT

DRAWN	SWP	DATE	10/04/2023	DWG NO.	SIZE	REV.
CHECKED	ABP	DATE	10/10/2023	10002-803	C	-
APPROVED	-	DATE	MM/DD/YYYY	TITLE		
PAGE	2 of 5	SCALE	NTS	SK6AT WATER TANK ELECTRICAL SCHEMATIC	<small>PROPRIETARY AND CONFIDENTIAL. THE INFORMATION CONTAINED IN THIS DRAWING IS THE SOLE PROPERTY OF HOLT MANUFACTURING. ANY REPRODUCTION IN PART OR AS A WHOLE WITHOUT THE WRITTEN PERMISSION OF HOLT MANUFACTURING IS PROHIBITED.</small>	

### HARNESS/WIRE IDENTIFICATION CODE

HARNESS ID GAUGE  
[xxxx]-[xxxx] [xx]-[xx]

WIRE GROUP COLOR

### COLOR ABBREVIATIONS

RD	RED
WH	WHITE
OR	ORANGE
YL	YELLOW
PK	PINK
BK	BLACK
GY	GRAY
PU	PURPLE
BR	BROWN
GN	GREEN
BU	BLUE

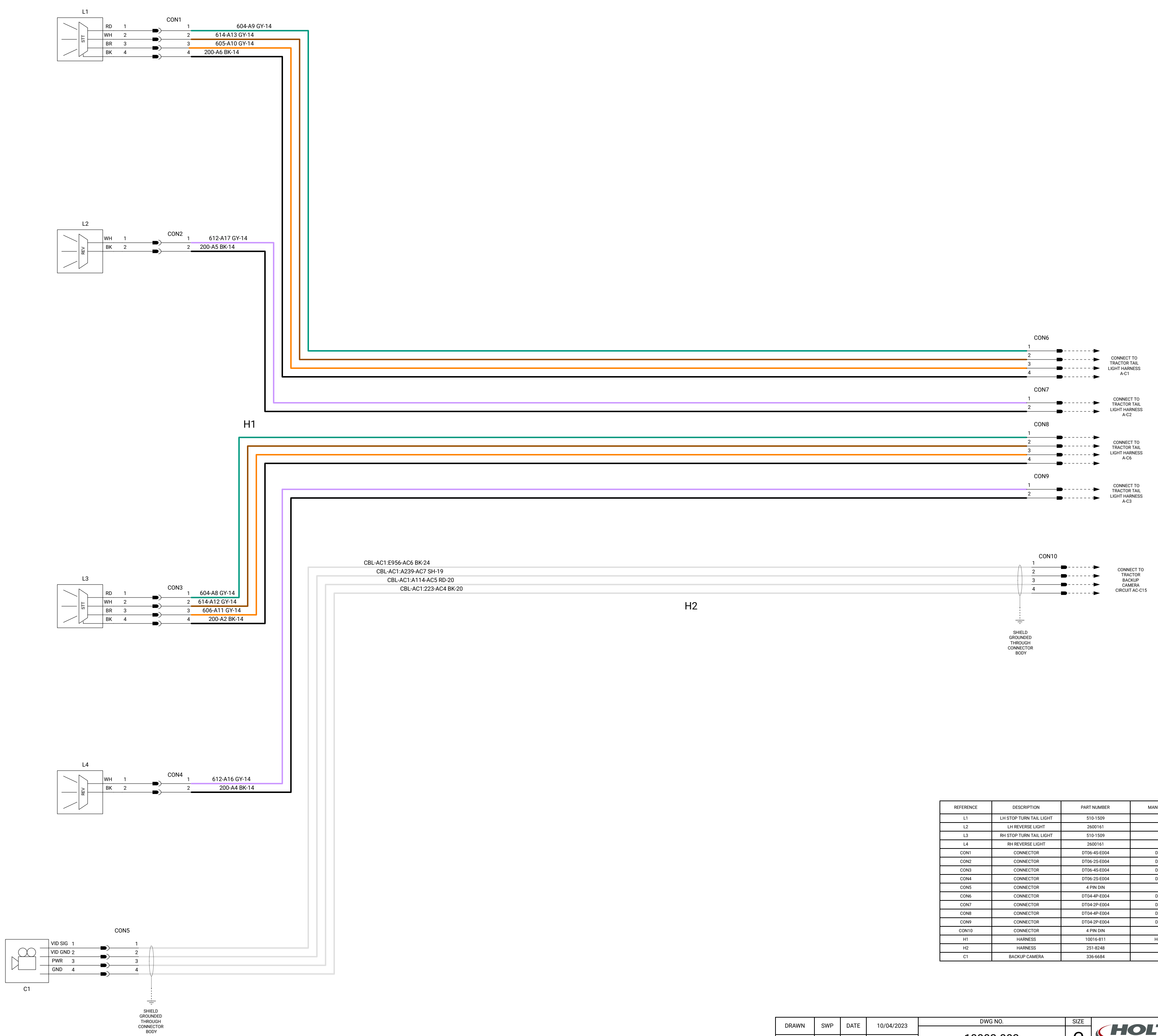
### LINE PATTERNS

WIRE  
COMPONENT GROUP  
SYMBOLS

### COLOR DESCRIPTIONS

(Red line)	24V POWER
(Blue line)	SWITCHED 24V POWER
(Black line)	GROUND
(Green line)	JOYSTICK CIRCUIT
(Light Green line)	MONITOR CIRCUIT
(Purple line)	REVERSE LIGHT AND BACKUP ALARM
(Cyan line)	TAIL LIGHT CIRCUIT
(Orange line)	TURN CIRCUIT
(Brown line)	STOP CIRCUIT
(Dark Brown line)	PUMP PWM EMULATION
(Grey line)	ROJO CIRCUIT
(Dark Blue line)	LEVEL/PRESSURE SENSOR CIRCUIT
(Yellow line)	WATER TRUCK CANBUS
(Dark Green line)	SOLENOID DRIVER CHANNELS
(White line)	VIDEO
(Yellow-Green line)	BRAKE SYSTEM
(Magenta line)	12V POWER
(Light Blue line)	SWITCHED 12V POWER
(Light Green line)	HOSE REEL CIRCUIT

### TRACTOR UNIT SCHEMATIC



REFERENCE	DESCRIPTION	PART NUMBER	MANUFACTURER
L1	LH STOP TURN TAIL LIGHT	510-1509	CAT
L2	LH REVERSE LIGHT	2600161	CAT
L3	RH STOP TURN TAIL LIGHT	510-1509	CAT
L4	RH REVERSE LIGHT	2600161	CAT
CON1	CONNECTOR	DT06-4S-E004	DEUTSCH
CON2	CONNECTOR	DT06-2S-E004	DEUTSCH
CON3	CONNECTOR	DT06-4S-E004	DEUTSCH
CON4	CONNECTOR	DT06-2S-E004	DEUTSCH
CON5	CONNECTOR	4 PIN DIN	CAT
CON6	CONNECTOR	DT04-4P-E004	DEUTSCH
CON7	CONNECTOR	DT04-2P-E004	DEUTSCH
CON8	CONNECTOR	DT04-4P-E004	DEUTSCH
CON9	CONNECTOR	DT04-2P-E004	DEUTSCH
CON10	CONNECTOR	4 PIN DIN	CAT
H1	HARNESS	10016-811	HOLT MFG
H2	HARNESS	251-8248	CAT
C1	BACKUP CAMERA	336-6684	CAT

NOTES:  
 1. RUN HARNESSES IN LOCATIONS SHOWN IN DRAWING NUMBER X.  
 2. RE-CONNECT BACKUP ALARM AND INERTIAL MEASUREMENT SENSOR TO TRACTOR HARNESS AS PER CAT MEDIA NUMBER RENR8032-02.

DRAWN	SWP	DATE	10/04/2023	DWG NO.	10002-803	SIZE	C	REV.	-
CHECKED	ABP	DATE	10/10/2023	TITLE	SK6AT WATER TANK ELECTRICAL SCHEMATIC				
APPROVED	-	DATE	MM/DD/YYYY	PROPRIETARY AND CONFIDENTIAL. THE INFORMATION CONTAINED IN THIS DRAWING IS THE SOLE PROPERTY OF HOLT MANUFACTURING. ANY REPRODUCTION IN PART OR AS A WHOLE WITHOUT THE WRITTEN PERMISSION OF HOLT MANUFACTURING IS PROHIBITED.					
PAGE	3 of 5	SCALE	NTS						

### HARNESS/WIRE IDENTIFICATION CODE

[xxxx]-[xxxxx][xx]-[xx]

↑ HARNESS ID GAUGE  
↑ WIRE GROUP COLOR

---

### COLOR ABBREVIATIONS

RD	RED
WH	WHITE
OR	ORANGE
YL	YELLOW
PK	PINK
BK	BLACK
GY	GRAY
PV	PURPLE
BR	BROWN
GN	GREEN
BU	BLUE

---

### LINE PATTERNS

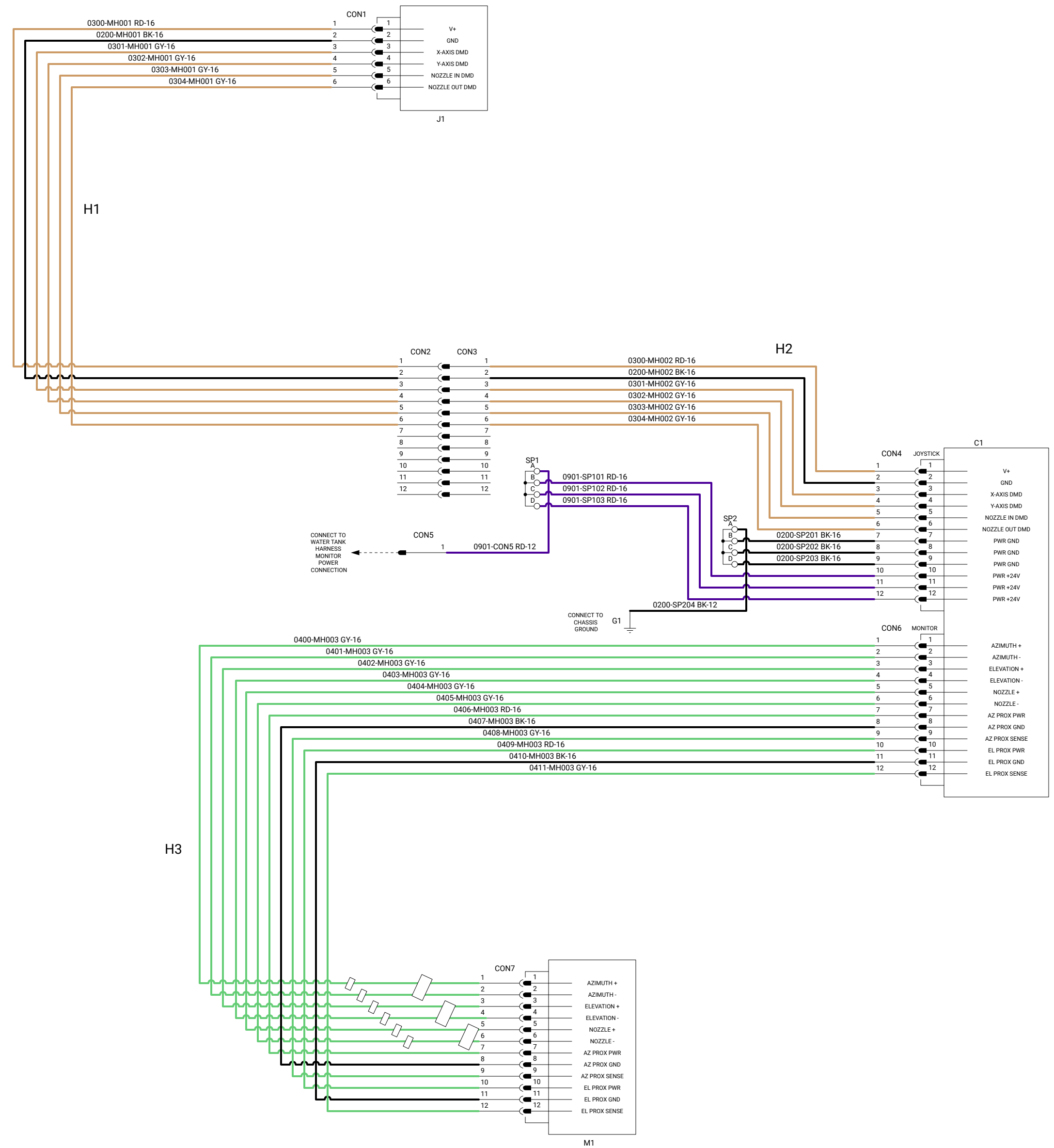
— WIRE  
- - - COMPONENT GROUP  
- - - SYMBOLS

---

### COLOR DESCRIPTIONS

Red	24V POWER
Blue	SWITCHED 24V POWER
Black	GROUND
Orange	JOYSTICK CIRCUIT
Gray	MONITOR CIRCUIT
Purple	REVERSE LIGHT AND BACKUP ALARM
Green	TAIL LIGHT CIRCUIT
Yellow	TURN CIRCUIT
Brown	STOP CIRCUIT
Pink	PUMP PWM EMULATION
White	ROJO CIRCUIT
Light Blue	LEVEL/PRESSURE SENSOR CIRCUIT
Light Green	WATER TRUCK CANBUS
Light Purple	SOLENOID DRIVER CHANNELS
Light Yellow	VIDEO
Light Orange	BRAKE SYSTEM
Light Blue	12V POWER
Light Green	SWITCHED 12V POWER
Light Purple	HOSE REEL CIRCUIT

### WATER MONITOR SCHEMATIC



REFERENCE	DESCRIPTION	PART NUMBER	MANUFACTURER
C1	MONITOR CONTROLLER	81824001	ELKHART BRASS
J1	JOYSTICK	41067000	ELKHART BRASS
M1	WATER MONITOR	00008101_07000804	ELKHART BRASS
CON1	CONNECTOR	DTM06-6S	DEUTSCH
CON2	CONNECTOR	DTM04-12SA	DEUTSCH
CON3	CONNECTOR	DTM04-12PA-L012	DEUTSCH
CON4	CONNECTOR	DTM06-12SA	DEUTSCH
CON5	CONNECTOR	ATH004-112P-PM05	AMPHENOL
CON6	CONNECTOR	DTM06-12SB	DEUTSCH
CON7	CONNECTOR	DTM06-12SC	DEUTSCH
H1	HARNESS	10061-811	HOLT MFG
H2	HARNESS	10017-811	HOLT MFG
H3	HARNESS	10063-811	HOLT MFG
SP1	SPLICE PACK	38076	APTIV/WAYTEK
SP2	SPLICE PACK	38076	APTIV/WAYTEK

NOTES:  
 1. RUN HARNESS IN LOCATIONS SHOWN USING DRAWING NUMBER X.  
 2. USE COPPER GREASE ON THREADS WHEN SECURING ALL RING CRIMP TERMINALS.  
 3. CONNECT CON5 TO MATING POWER CONNECTOR.

DRAWN	SWP	DATE	10/04/2023	DWG NO.	SIZE	REV.
CHECKED	ABP	DATE	10/10/2023	10002-803	C	-
APPROVED	-	DATE	MM/DD/YYYY	TITLE		
PAGE	4 of 5	SCALE	NTS	SK6AT WATER TANK ELECTRICAL SCHEMATIC		

PROPRIETARY AND CONFIDENTIAL  
 THE INFORMATION CONTAINED IN THIS DRAWING IS THE SOLE PROPERTY OF HOLT MANUFACTURING. ANY REPRODUCTION IN PART OR AS A WHOLE WITHOUT THE WRITTEN PERMISSION OF HOLT MANUFACTURING IS PROHIBITED.

### HARNESS/WIRE IDENTIFICATION CODE

[xxxx]-[xxxxx] [xx]-[xx]

↑                      ↑  
WIRE GROUP            COLOR

---

### COLOR ABBREVIATIONS

RD	RED
WH	WHITE
OR	ORANGE
YL	YELLOW
PK	PINK
BK	BLACK
GY	GRAY
PJ	PURPLE
BR	BROWN
GN	GREEN
BU	BLUE

---

### LINE PATTERNS

— WIRE  
 - - - COMPONENT GROUP  
 ○ SYMBOLS

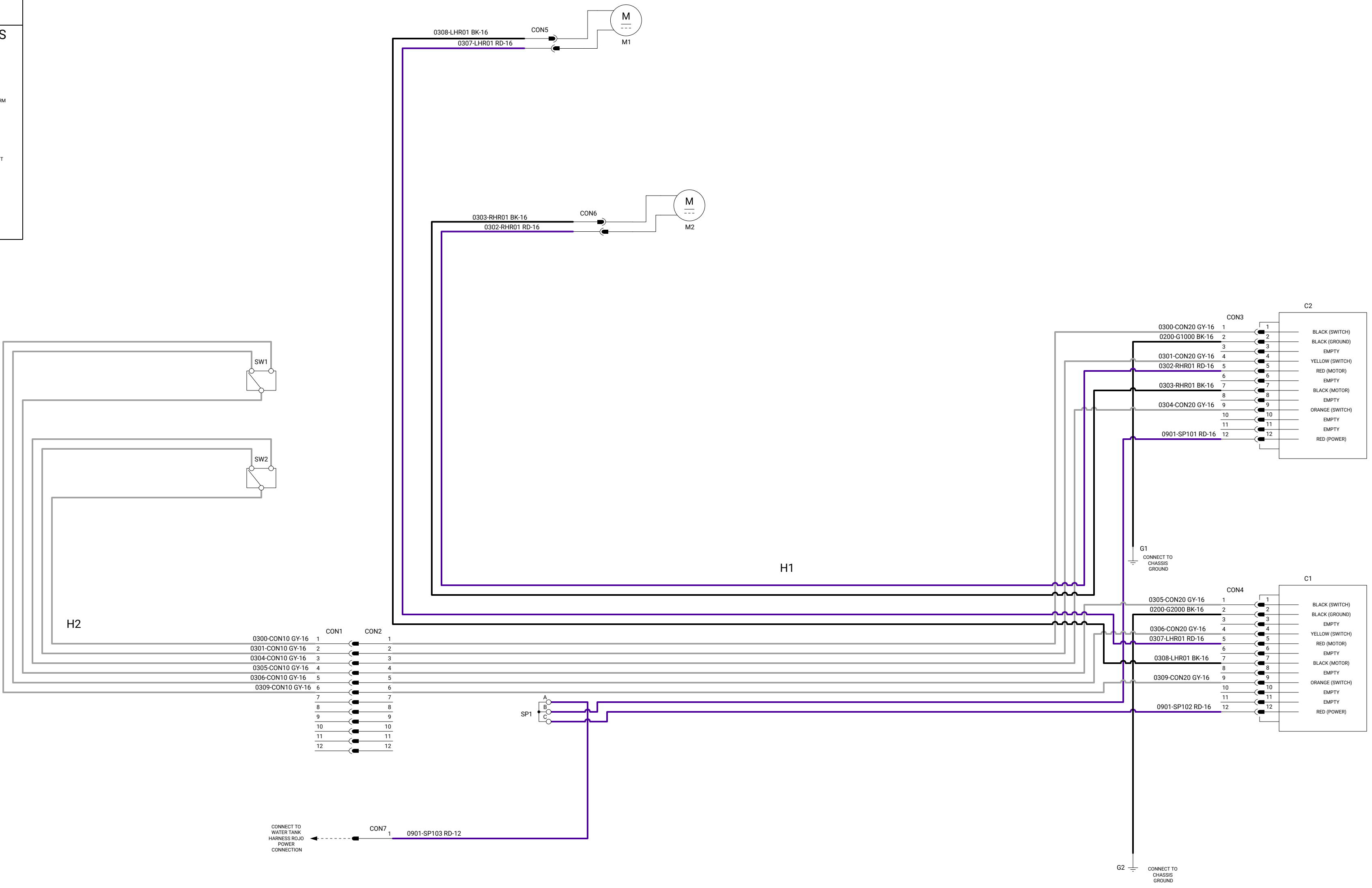
---

### COLOR DESCRIPTIONS

Red	24V POWER
Blue	SWITCHED 24V POWER
Black	GROUND
Green	JOYSTICK CIRCUIT
Purple	MONITOR CIRCUIT
Yellow	REVERSE LIGHT AND BACKUP ALARM
Orange	TAIL LIGHT CIRCUIT
White	TURN CIRCUIT
Grey	STOP CIRCUIT
Brown	PUMP PWM EMULATION
Black	ROJO CIRCUIT
Blue	LEVEL/PRESSURE SENSOR CIRCUIT
Green	WATER TRUCK CANBUS
Purple	SOLENOID DRIVER CHANNELS
White	VIDEO
Yellow	BRAKE SYSTEM
Orange	12V POWER
White	SWITCHED 12V POWER
Green	HOSE REEL CIRCUIT

## SIDE SPRAYER SCHEMATIC

REFERENCE	DESCRIPTION	PART NUMBER	MANUFACTURER
C1	ROJO CONTROLLER	0000081	A1
C2	ROJO CONTROLLER	0000081	A1
SP1	SPUCE PACK	12040977	APTIV/WAYTEK
CON1	CONNECTOR	DTM06-12SA	DEUTSCH
CON2	CONNECTOR	DTM06-12PA-L012	DEUTSCH
CON3	CONNECTOR	DTM06-12SA	DEUTSCH
CON4	CONNECTOR	DTM06-12SA	DEUTSCH
CON5	CONNECTOR	SAE-16GA-15	TBD
CON6	CONNECTOR	SAE-16GA-15	TBD
CON7	CONNECTOR	ATND04-1-12P-PM05	AMPHENOL
H1	HARNESS	10964-811	HOLT MFG
H2	HARNESS	10965-811	HOLT MFG
SW1	ROJO CONTROL SWITCH	V851590C-A2900-000	CARLING TECHNOLOGIES
SW2	ROJO CONTROL SWITCH	V851590C-A2900-000	CARLING TECHNOLOGIES
M1	SIDE SPRAYER ROTATING JOINT	00000378	A1
M2	SIDE SPRAYER ROTATING JOINT	00000378	A1



NOTES:  
 1. RUN HARNESS IN LOCATIONS SHOWN USING DRAWING NUMBER X.  
 2. USE COPPER GREASE ON THREADS WHEN SECURING ALL RING CRIMP TERMINALS.  
 3. CONNECT CON7 TO MATING POWER CONNECTOR.

DRAWN	SWP	DATE	10/04/2023	DWG NO.	10002-803	SIZE	C	REV.	-
CHECKED	ABP	DATE	10/10/2023	TITLE	SK6AT WATER TANK ELECTRICAL SCHEMATIC				
APPROVED	-	DATE	MM/DD/YYYY	<small>PROPRIETARY AND CONFIDENTIAL. THE INFORMATION CONTAINED IN THIS DRAWING IS THE SOLE PROPERTY OF HOLT MANUFACTURING. ANY REPRODUCTION IN PART OR AS A WHOLE WITHOUT THE WRITTEN PERMISSION OF HOLT MANUFACTURING IS PROHIBITED.</small>					
PAGE	5 of 5	SCALE	NTS						