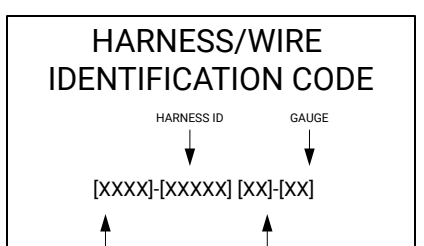


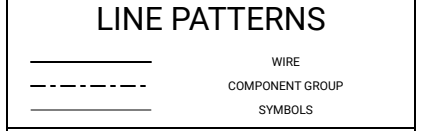
REVISIONS

REV.	DESCRIPTION	DATE	DRAWN	APPROVED
-	INITIAL RELEASE	9-14-23	SWP	



COLOR ABBREVIATIONS

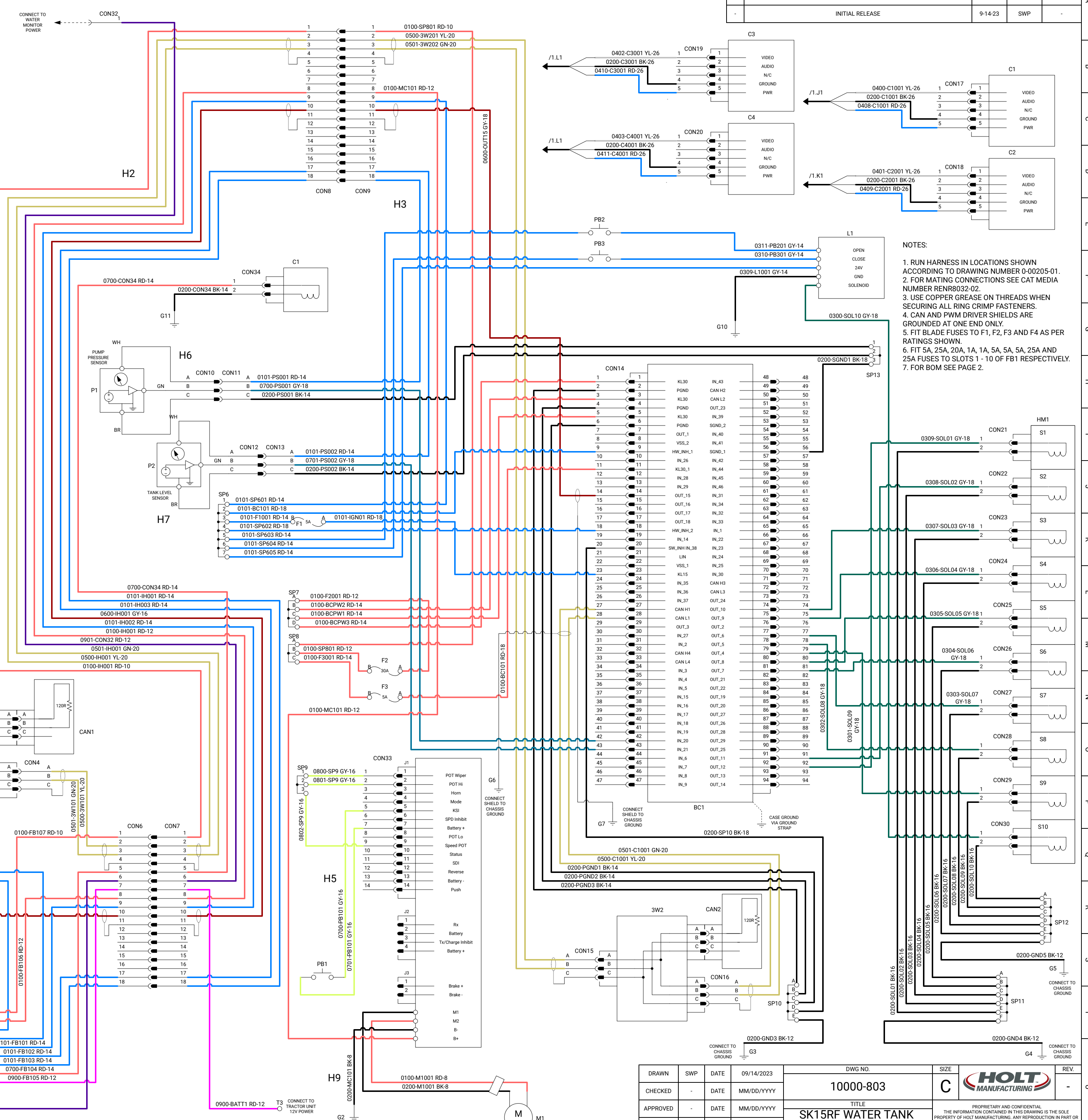
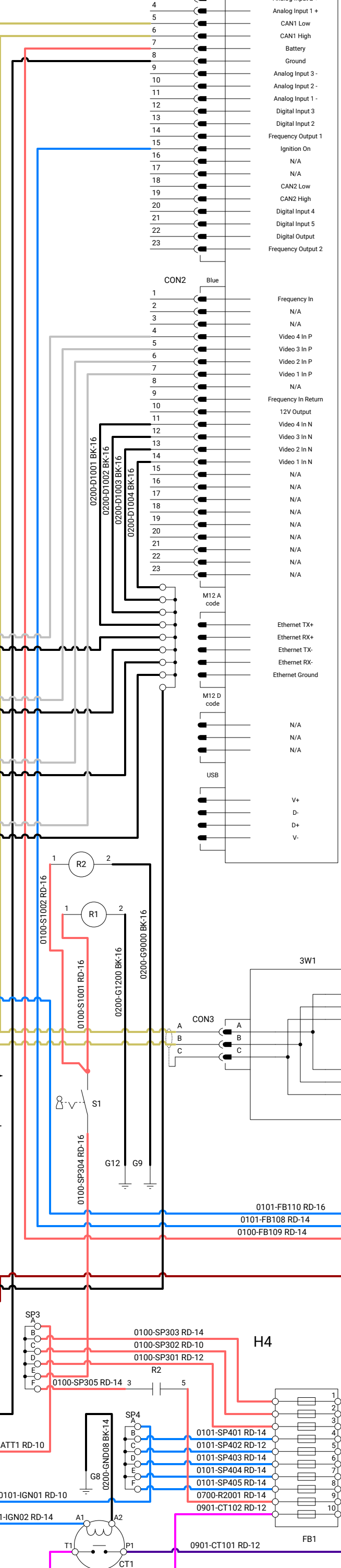
RD	RED
WH	WHITE
OR	ORANGE
YL	YELLOW
PK	PINK
BK	BLACK
GY	GRAY
PU	PURPLE
BR	BROWN
GN	BROWN
BL	BLUE



COLOR DESCRIPTIONS

Red	24V POWER
Blue	SWITCHED 24V POWER
Black	GROUND
Yellow	JOYSTICK CIRCUIT
Green	MONITOR CIRCUIT
Purple	REVERSE LIGHT AND BACKUP ALARM
Orange	TAIL LIGHT CIRCUIT
Pink	TURN CIRCUIT
White	STOP CIRCUIT
Brown	PUMP PWM EMULATION
Light Blue	ROJO CIRCUIT
Light Green	LEVEL/PRESSURE SENSOR CIRCUIT
Light Yellow	WATER TRUCK CANBUS
Light Purple	SOLENOID DRIVER CHANNELS
Light Blue	VIDEO
Light Green	BRAKE SYSTEM
Light Yellow	12V POWER
Light Purple	SWITCHED 12V POWER
Light Blue	HOSE REEL CIRCUIT

TANK SYSTEM SCHEMATIC




- ### NOTES:
1. RUN HARNESS IN LOCATIONS SHOWN ACCORDING TO DRAWING NUMBER 0-00205-01.
 2. FOR MATING CONNECTIONS SEE CAT MEDIA NUMBER RENR8032-02.
 3. USE COPPER GREASE ON THREADS WHEN SECURING ALL RING CRIMP FASTENERS.
 4. CAN AND PWM DRIVER SHIELDS ARE GROUNDED AT ONE END ONLY.
 5. FIT BLADE FUSES TO F1, F2, F3 AND F4 AS PER RATINGS SHOWN.
 6. FIT 5A, 25A, 20A, 1A, 1A, 5A, 5A, 25A AND 25A FUSES TO SLOTS 1 - 10 OF FB1 RESPECTIVELY.
 7. FOR BOM SEE PAGE 2.

DRAWN	SWP	DATE	09/14/2023	DWG NO.	10000-803	SIZE	C	REV.	
CHECKED		DATE	MM/DD/YYYY	TITLE	SK15RF WATER TANK ELECTRICAL SCHEMATIC				
APPROVED		DATE	MM/DD/YYYY	PROPERTY AND CONFIDENTIAL	THE INFORMATION CONTAINED IN THIS DRAWING IS THE SOLE PROPERTY OF HOLT MANUFACTURING. ANY REPRODUCTION IN PART OR AS A WHOLE WITHOUT THE WRITTEN PERMISSION OF HOLT MANUFACTURING IS PROHIBITED.				
PAGE	1 of 4	SCALE	NTS						

A
B
C
D
E
F
G
H
I
J
K
L
M
N
O
P
Q
R
S
T

REFERENCE	DESCRIPTION	PART NUMBER	MANUFACTURER
SP2	SPALICE PACK	DT04-4P-P021	DEUTSCH
SP3	SPALICE PACK	38076	APTIW/WAYTEK
SP4	SPALICE PACK	38076	APTIW/WAYTEK
SP6	SPALICE PACK	DT04-08PA-P021	DEUTSCH
SP7	SPALICE PACK	38076	APTIW/WAYTEK
SP8	SPALICE PACK	38076	APTIW/WAYTEK
SP9	SPALICE PACK	DT04-4P-P021	DEUTSCH
SP10	SPALICE PACK	38076	APTIW/WAYTEK
SP11	SPALICE PACK	38076	APTIW/WAYTEK
SP12	SPALICE PACK	38076	APTIW/WAYTEK
SP13	SPALICE PACK	DT04-4P-P021	DEUTSCH
M1	HOSE REEL MOTOR	1185-1124-EF	COX REELS
CAN1	CAN RESISTOR	AT06-2S-R120	AMPHENOL
CAN2	CAN RESISTOR	AT06-2S-R120	AMPHENOL
D1	DISPLAY	P4700-T	ENNOVATION
BC1	BODAS CONTROLLER	RC10-10/21	BOSCH BEKROTH
TS1	TRANSISTOR SWITCH ASSEMBLY	1-60513-01	HOLT MFG
F1	FUSE AND PLUG	1203376A 12033731	APTIW/WAYTEK
F2	FUSE AND PLUG	1203376A 12033731	APTIW/WAYTEK
F3	FUSE AND PLUG	1203376A 12033731	APTIW/WAYTEK
SW1	3 WAY CONNECTOR	AT04-3P-RYD1	AMPHENOL
SW2	3 WAY CONNECTOR	AT04-3P-RYD1	AMPHENOL
P1	PUMP PRESSURE SENSOR	DMP331-110-P005-3-3-TAO-F00-1-1-000	SENSOR ONE
P2	TANK LEVEL SENSOR	DMP331-110-P005-3-3-TAO-F00-1-1-000	SENSOR ONE
CON1	CONNECTOR	770680-1	AMP
CON2	CONNECTOR	770680-5	AMP
CON3	CONNECTOR	DT06-2S	DEUTSCH
CON4	CONNECTOR	DT06-2S	DEUTSCH
CON5	CONNECTOR	DT06-2S-EP11	DEUTSCH
CON6	CONNECTOR	AHD06-24-18SN-SRA	AMPHENOL
CON7	CONNECTOR	AHD06-24-18PN-SRA	AMPHENOL
CON8	CONNECTOR	AHD06-24-18SN-SRA	AMPHENOL
CON9	CONNECTOR	AHD06-24-18PN-SRA	AMPHENOL
CON10	CONNECTOR	DT04-3P-E004	DEUTSCH
CON11	CONNECTOR	DT06-2S-E004	DEUTSCH
CON12	CONNECTOR	DT04-3P-E004	DEUTSCH
CON13	CONNECTOR	DT06-2S-E004	DEUTSCH
CON14	CONNECTOR	R017010843	BOSCH BEKROTH
CON15	CONNECTOR	DT06-2S-E004	DEUTSCH
CON16	CONNECTOR	DT06-2S-E004	DEUTSCH
CON17	CONNECTOR	RVS-105N	RVS
CON18	CONNECTOR	RVS-105N	RVS
CON19	CONNECTOR	RVS-105N	RVS
CON20	CONNECTOR	RVS-105N	RVS
CON21	CONNECTOR	DT06-2S-E004	DEUTSCH
CON22	CONNECTOR	DT06-2S-E004	DEUTSCH
CON23	CONNECTOR	DT06-2S-E004	DEUTSCH
CON24	CONNECTOR	DT06-2S-E004	DEUTSCH
CON25	CONNECTOR	DT06-2S-E004	DEUTSCH
CON26	CONNECTOR	DT06-2S-E004	DEUTSCH
CON27	CONNECTOR	DT06-2S-E004	DEUTSCH
CON28	CONNECTOR	DT06-2S-E004	DEUTSCH
CON29	CONNECTOR	DT06-2S-E004	DEUTSCH
CON30	CONNECTOR	DT06-2S-E004	DEUTSCH
CON31	CONNECTOR	DT06-2S-E004	DEUTSCH
CON32	CONNECTOR	DT06-2S-E004	DEUTSCH
CON33	CONNECTOR	DT06-2S-E004	DEUTSCH
CON34	CONNECTOR	DT06-2S-E004	DEUTSCH
CON35	CONNECTOR	DT04-3P-E004	DEUTSCH
C1	REARVIEW CAMERA	RVS-659	RVS
C2	DRIVER SIDE CAMERA	RVS-659	RVS
C3	MANHOLE CAMERA	RVS-770	RVS
C4	KERB SIDE CAMERA	RVS-659	RVS
H1	HARNESS	10000-811	HOLT MFG
H2	HARNESS	10001-811	HOLT MFG
H3	HARNESS	10003-811	HOLT MFG
H4	HARNESS	10003-811	HOLT MFG
H5	HARNESS	10004-811	HOLT MFG
H6	HARNESS	10005-811	HOLT MFG
H7	HARNESS	10006-811	HOLT MFG
H8	HARNESS	10007-811	HOLT MFG
H9	HARNESS	10008-811	HOLT MFG
HM1	HYDRAULIC MANIFOLD	2712513	WOMACK
FB1	FUSE BOX	PDM1001ZDM	LITTLEFUSE
PB1	PUSH BUTTON SWITCH	M-608-BX	LITTLEFUSE
PB2	PUSH BUTTON SWITCH	M-608-BX	LITTLEFUSE
PB3	PUSH BUTTON SWITCH	M-608-BX	LITTLEFUSE
MC1	MOTOR CONTROLLER	1212P	CURTIS
CT1	CONTACTOR	167-0138	CAT
ST	KEY SWITCH	31-602	POLLACK
R1	RELAY	1-1414167-0	TE
R2	RELAY	1-1414167-0	TE
C1	DIVERTER MANIFOLD AND SOLENOID ASSEMBLY	-	WOMACK
L1	SOLENOID DRIVER ASSEMBLY	10000-203	HOLT MFG

DRAWN	SWP	DATE	09/14/2023	DWG NO.	SIZE	REV.
CHECKED	-	DATE	MM/DD/YYYY	10000-803	C	-
APPROVED	-	DATE	MM/DD/YYYY	TITLE		
PAGE	2 of 4	SCALE	NTS	SK15RF WATER TANK ELECTRICAL SCHEMATIC	<small>PROPRIETARY AND CONFIDENTIAL. THE INFORMATION CONTAINED IN THIS DRAWING IS THE SOLE PROPERTY OF HOLT MANUFACTURING. ANY REPRODUCTION IN PART OR AS A WHOLE WITHOUT THE WRITTEN PERMISSION OF HOLT MANUFACTURING IS PROHIBITED.</small>	

HARNESS/WIRE IDENTIFICATION CODE

HARNESS ID GAUGE
[xxxx]-[xxxx] [xx]-[xx]

WIRE GROUP COLOR

COLOR ABBREVIATIONS

RD	RED
WH	WHITE
OR	ORANGE
YL	YELLOW
PK	PINK
BK	BLACK
GY	GRAY
PU	PURPLE
BR	BROWN
GN	GREEN
BU	BLUE

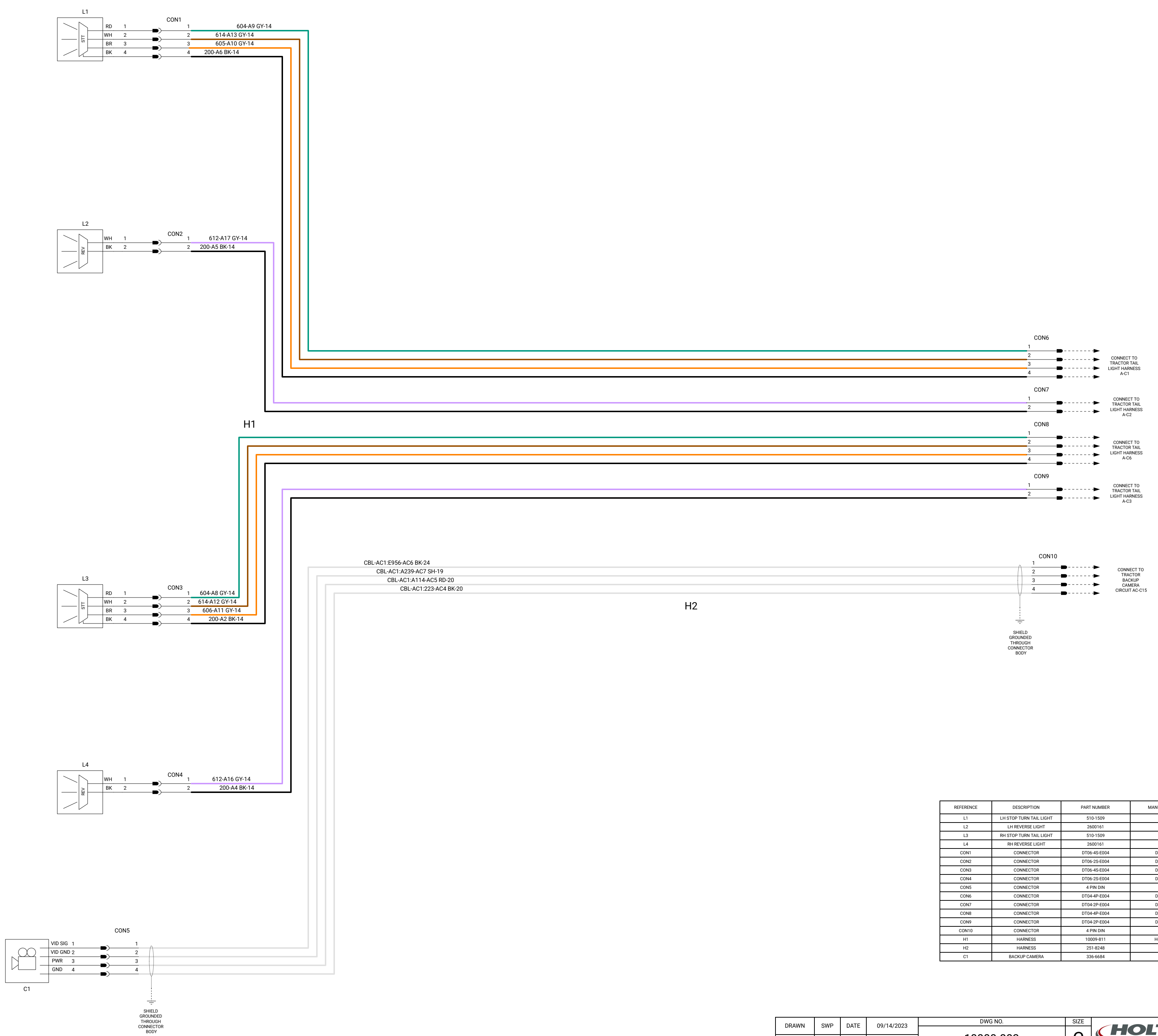
LINE PATTERNS

WIRE
COMPONENT GROUP
SYMBOLS

COLOR DESCRIPTIONS

[Red Line]	24V POWER
[Blue Line]	SWITCHED 24V POWER
[Black Line]	GROUND
[Green Line]	JOYSTICK CIRCUIT
[Light Green Line]	MONITOR CIRCUIT
[Purple Line]	REVERSE LIGHT AND BACKUP ALARM
[Dark Green Line]	TAIL LIGHT CIRCUIT
[Orange Line]	TURN CIRCUIT
[Brown Line]	STOP CIRCUIT
[Dark Brown Line]	PUMP PWM EMULATION
[Grey Line]	ROJO CIRCUIT
[Light Blue Line]	LEVEL/PRESSURE SENSOR CIRCUIT
[Yellow Line]	WATER TRUCK CANBUS
[Dark Green Line]	SOLENOID DRIVER CHANNELS
[White Line]	VIDEO
[Yellow Line]	BRAKE SYSTEM
[Purple Line]	12V POWER
[Light Purple Line]	SWITCHED 12V POWER
[Light Green Line]	HOSE REEL CIRCUIT

TRACTOR UNIT SCHEMATIC



REFERENCE	DESCRIPTION	PART NUMBER	MANUFACTURER
L1	LH STOP TURN TAIL LIGHT	510-1509	CAT
L2	LH REVERSE LIGHT	2602161	CAT
L3	RH STOP TURN TAIL LIGHT	510-1509	CAT
L4	RH REVERSE LIGHT	2602161	CAT
CON1	CONNECTOR	DT06-4S-E004	DEUTSCH
CON2	CONNECTOR	DT06-2S-E004	DEUTSCH
CON3	CONNECTOR	DT06-4S-E004	DEUTSCH
CON4	CONNECTOR	DT06-2S-E004	DEUTSCH
CON5	CONNECTOR	4 PIN DIN	CAT
CON6	CONNECTOR	DT04-4P-E004	DEUTSCH
CON7	CONNECTOR	DT04-2P-E004	DEUTSCH
CON8	CONNECTOR	DT04-4P-E004	DEUTSCH
CON9	CONNECTOR	DT04-2P-E004	DEUTSCH
CON10	CONNECTOR	4 PIN DIN	CAT
H1	HARNESS	10009-811	HOLT MFG
H2	HARNESS	251-8248	CAT
C1	BACKUP CAMERA	336-6684	CAT

NOTES:
 1. RUN HARNESSES IN LOCATIONS SHOWN IN DRAWING NUMBER 0-00205-01.
 2. RE-CONNECT BACKUP ALARM AND INERTIAL MEASUREMENT SENSOR TO TRACTOR HARNESS AS PER CAT MEDIA NUMBER RENR8032-02.

DRAWN	SWP	DATE	09/14/2023	DWG NO.	10000-803	SIZE	C	REV.	-
CHECKED	-	DATE	MM/DD/YYYY	TITLE	SK15RF WATER TANK ELECTRICAL SCHEMATIC	PROPRIETARY AND CONFIDENTIAL THE INFORMATION CONTAINED IN THIS DRAWING IS THE SOLE PROPERTY OF HOLT MANUFACTURING. ANY REPRODUCTION IN PART OR AS A WHOLE WITHOUT THE WRITTEN PERMISSION OF HOLT MANUFACTURING IS PROHIBITED.			
APPROVED	-	DATE	MM/DD/YYYY	SCALE	NTS				
PAGE	3 of 4								

HARNESS/WIRE IDENTIFICATION CODE

HARNESS ID GAUGE
[xxxx]-[xxxx] [xx]-[xx]

↑ WIRE GROUP ↑ COLOR

COLOR ABBREVIATIONS

RD	RED
WH	WHITE
OR	ORANGE
YL	YELLOW
PK	PINK
BK	BLACK
GY	GRAY
PV	PURPLE
BR	BROWN
GN	GREEN
BU	BLUE

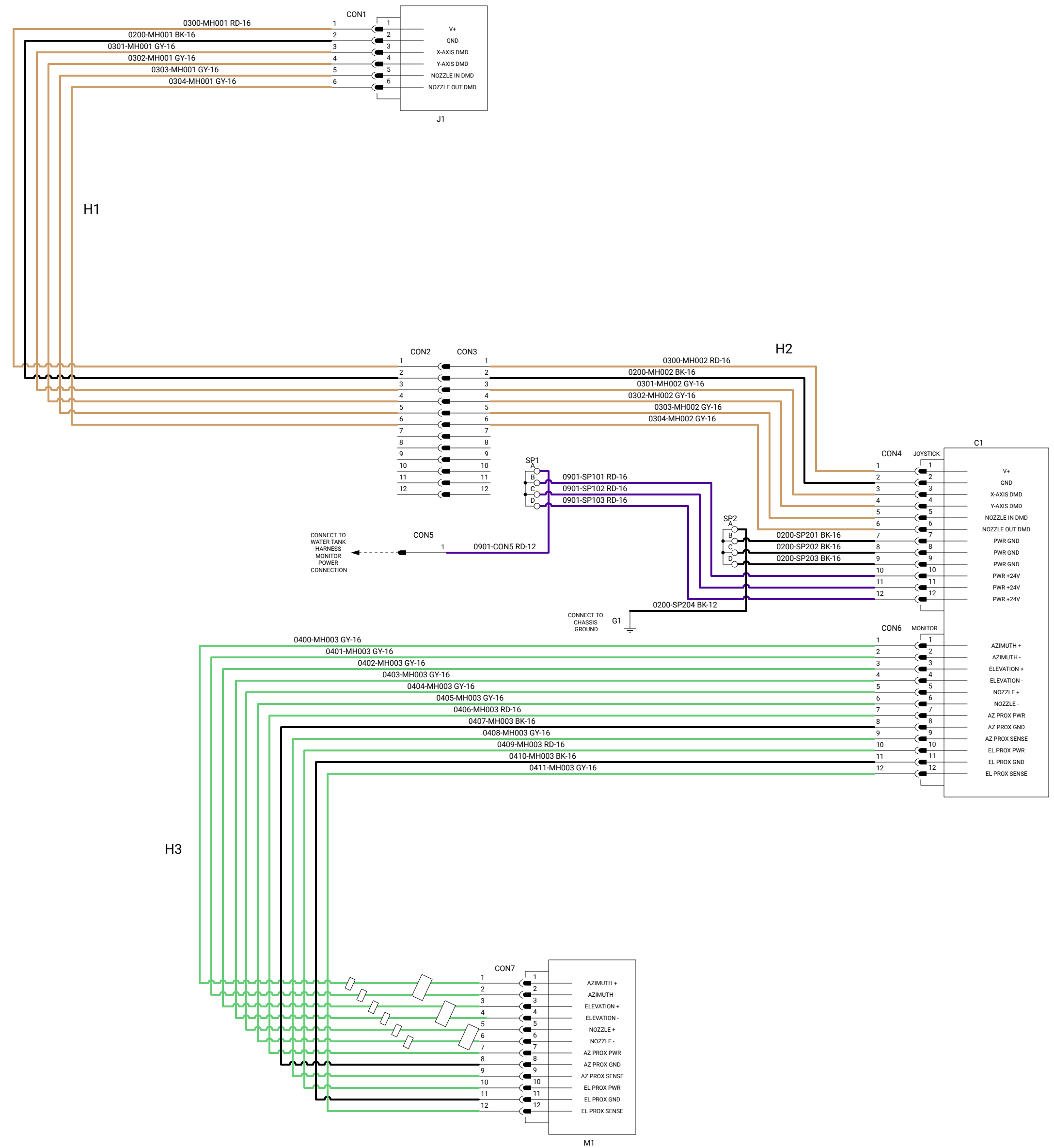
LINE PATTERNS

— WIRE
- - - COMPONENT GROUP
○ SYMBOLS

COLOR DESCRIPTIONS

Red	24V POWER
Blue	SWITCHED 24V POWER
Black	GROUND
Orange	JOYSTICK CIRCUIT
Grey	MONITOR CIRCUIT
Purple	REVERSE LIGHT AND BACKUP ALARM
Yellow	TAIL LIGHT CIRCUIT
Green	TURN CIRCUIT
Brown	STOP CIRCUIT
Pink	PUMP PWM EMULATION
White	ROJO CIRCUIT
Light Blue	LEVEL/PRESSURE SENSOR CIRCUIT
Light Green	WATER TRUCK CANBUS
Light Yellow	SOLENOID DRIVER CHANNELS
Light Purple	VIDEO
Light Blue	BRAKE SYSTEM
Light Green	12V POWER
Light Yellow	SWITCHED 12V POWER
Light Purple	HOSE REEL CIRCUIT

WATER MONITOR SCHEMATIC



REFERENCE	DESCRIPTION	PART NUMBER	MANUFACTURER
C1	MONITOR CONTROLLER	81824001	ELKHART BRASS
J1	JOYSTICK	41067000	ELKHART BRASS
M1	WATER MONITOR	00008101_07000804	ELKHART BRASS
CON1	CONNECTOR	DTM06-6S	DEUTSCH
CON2	CONNECTOR	DTM04-12SA	DEUTSCH
CON3	CONNECTOR	DTM04-12PA-L012	DEUTSCH
CON4	CONNECTOR	DTM06-12SA	DEUTSCH
CON5	CONNECTOR	ATH004-1.12P-PM05	AMPHENOL
CON6	CONNECTOR	DTM06-12SB	DEUTSCH
CON7	CONNECTOR	DTM06-12SC	DEUTSCH
H1	HARNESS	10013-811	HOLT MFG
H2	HARNESS	10013-811	HOLT MFG
H3	HARNESS	10014-811	HOLT MFG
SP1	SPLICE PACK	38076	APTIV/WAYTEK
SP2	SPLICE PACK	38076	APTIV/WAYTEK

NOTES:
 1. RUN HARNESS IN LOCATIONS SHOWN USING DRAWING NUMBER 0-00205-01.
 2. USE COPPER GREASE ON THREADS WHEN SECURING ALL RING CRIMP TERMINALS.
 3. CONNECT CON5 TO MATING POWER CONNECTOR.

DRAWN	SWP	DATE	09/14/2023	DWG NO.	SIZE	REV.
CHECKED	-	DATE	MM/DD/YYYY	10000-803	C	-
APPROVED	-	DATE	MM/DD/YYYY	TITLE		
PAGE	4 of 4	SCALE	NTS	SK15RF WATER TANK ELECTRICAL SCHEMATIC		

PROPRIETARY AND CONFIDENTIAL. THE INFORMATION CONTAINED IN THIS DRAWING IS THE SOLE PROPERTY OF HOLT MANUFACTURING. ANY REPRODUCTION IN PART OR AS A WHOLE WITHOUT THE WRITTEN PERMISSION OF HOLT MANUFACTURING IS PROHIBITED.